



Commercial Display Motherboard User Manual

Version number : V 1.5 Release date : December 10 , 2025

Table of contents

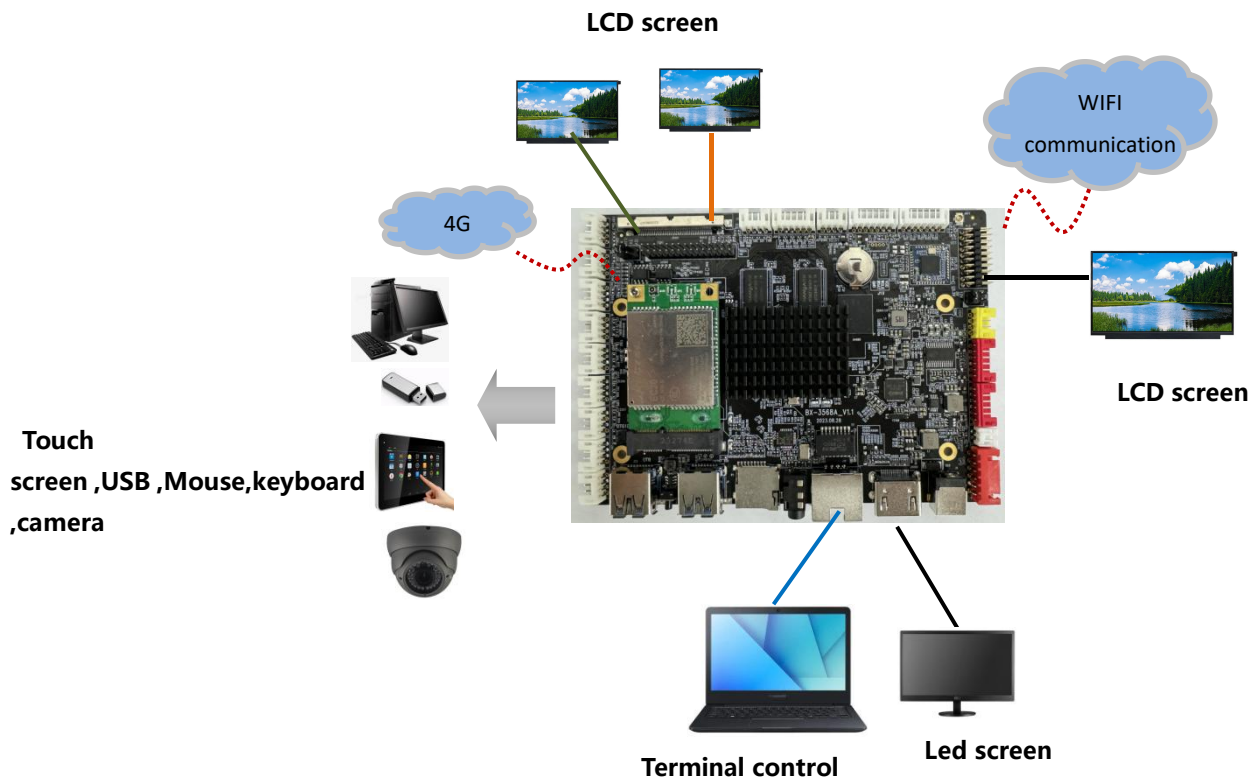
Device connection	3
Ledshow Suite software configuration	5
1. Communication methods	5
2. Add screen	5
3. Add program	6
4. Send program	7
5. Multi-screen synchronization	7
6. Multi-screen splicing	10
Cloud platform configuration	17
1. Android motherboard bound to cloud platform	17
2. Log in to the cloud platform	20
3. New Program	20
4. Add program	21
5. Editing programs	21
6. Release program	22
LEDsuit APP Configuration	23
1. Connect control card	23

2. Add screen	24
3. Editing programs	25
4. Program sent	26
LCD signal transmission control	27
1. Sending main interface	27
2. System	28
3. Network	29
4. WiFi	29
5. Advanced	31
6. Play Now	33
7. Clear	33
8. Language	33
9. Restart	34
10. Network	34
11. Storage	34
12. About	35
Network configuration	37

Device connection

The LCD commercial display motherboard connects to the computer and the LCD screen, as shown in the following figure:

Taking BX-3568A as an example



Commercial display motherboards can be used with Ledshow Suite software, cloud platforms, and Pingxiaoguo. The app allows users to create new programs, send programs, and perform other operations. Below, we will introduce the relevant configuration methods

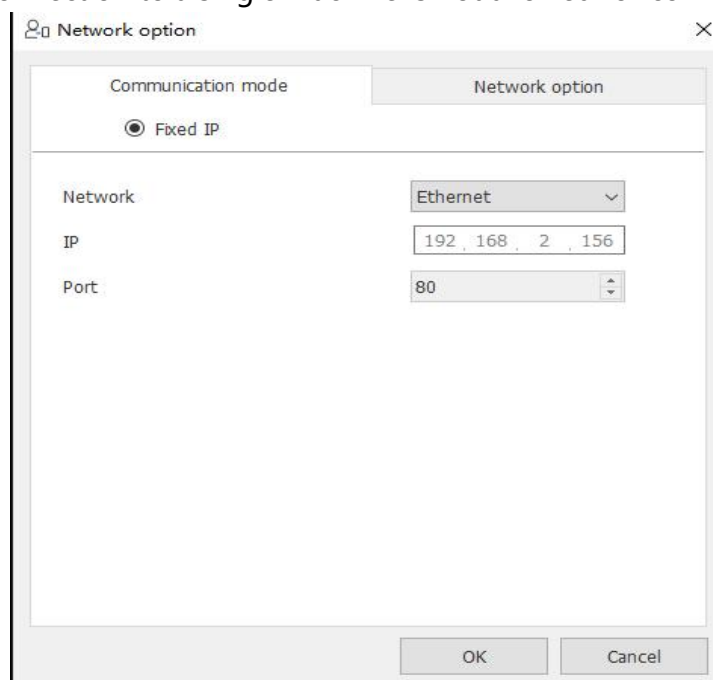
for the Ledshow Suite software and the cloud platform.

Ledshow Suite software configuration

1. Communication methods

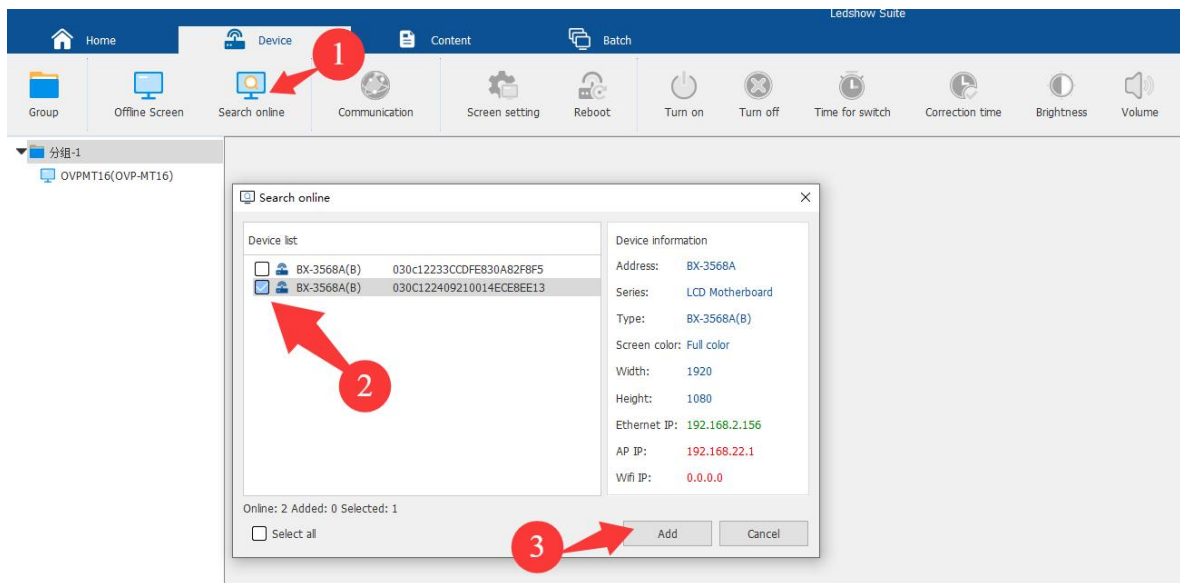
Click "Device" in the menu bar -> "Communication" -> enter the "Network Configuration" interface, and select "Static IP" mode.

Note: Direct connection to a single machine is not allowed for communication .



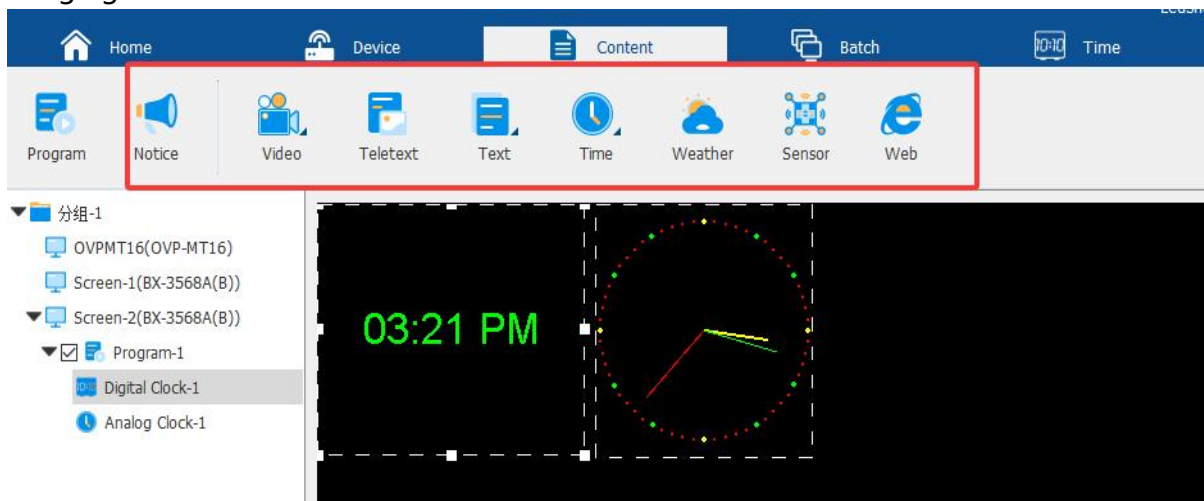
2. Add screen

Click "Device" in the menu bar -> "Group-1" and select "Online Screen Search". In the "Online Screen Search" interface, you can see all online screens in the "Device List". Select "BX-3568A" and click "Add" to complete adding the screen, as shown in the image below.

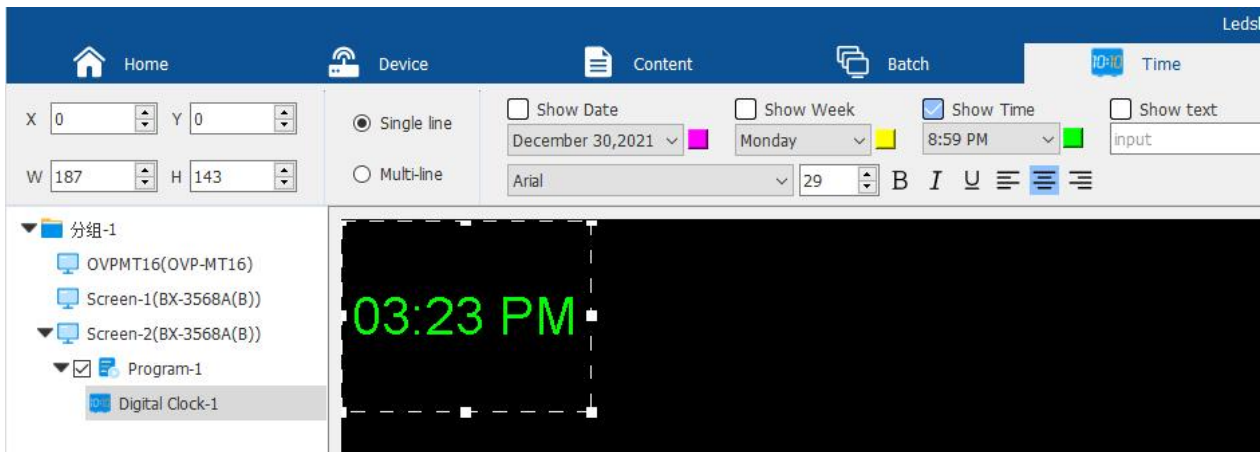


3. Add program

After successfully adding the screen, we can go to the main interface of the software to edit the program content we want. By clicking "Section" in the menu bar , users can choose to add "Announcement Section", "Video Section", "Image and Text Section", "Text Section", "Time Section", "Weather Section", "Sensor Section", and " Web Section ", as shown in the following figure:



Add a time zone here , as shown in the image below:



After following the steps above, you have completed the creation of one program page. To create multiple program pages, simply repeat the steps above. Once you have finished creating your program pages, please remember to save your work. Click " Save " under the " Home " menu .

4. Send program

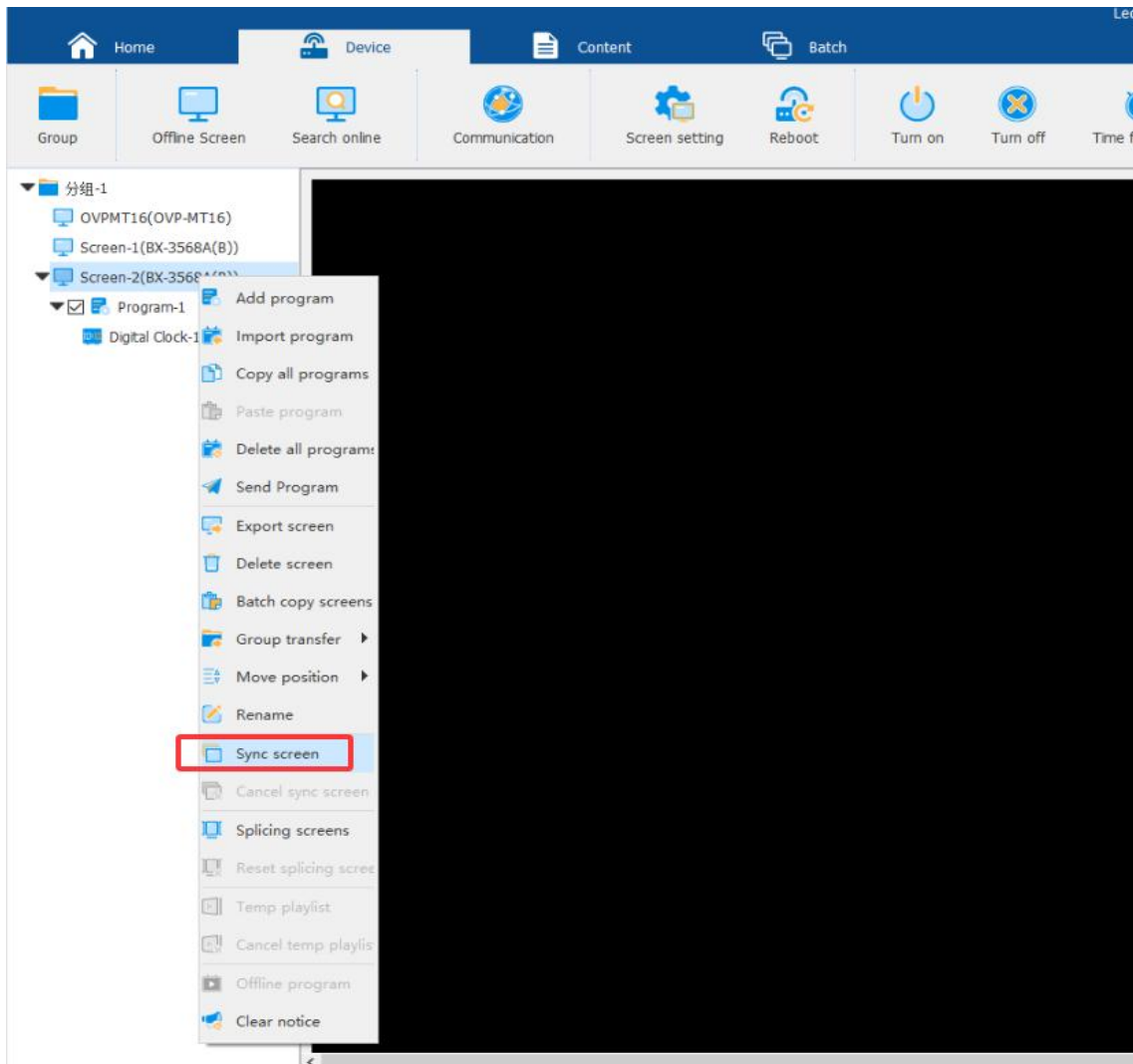
To send the current program file, click the send button below the program area



, and the screen will start playing the program. To play different program files, click "Home," select the open button, open the program file, and then click send to play it.

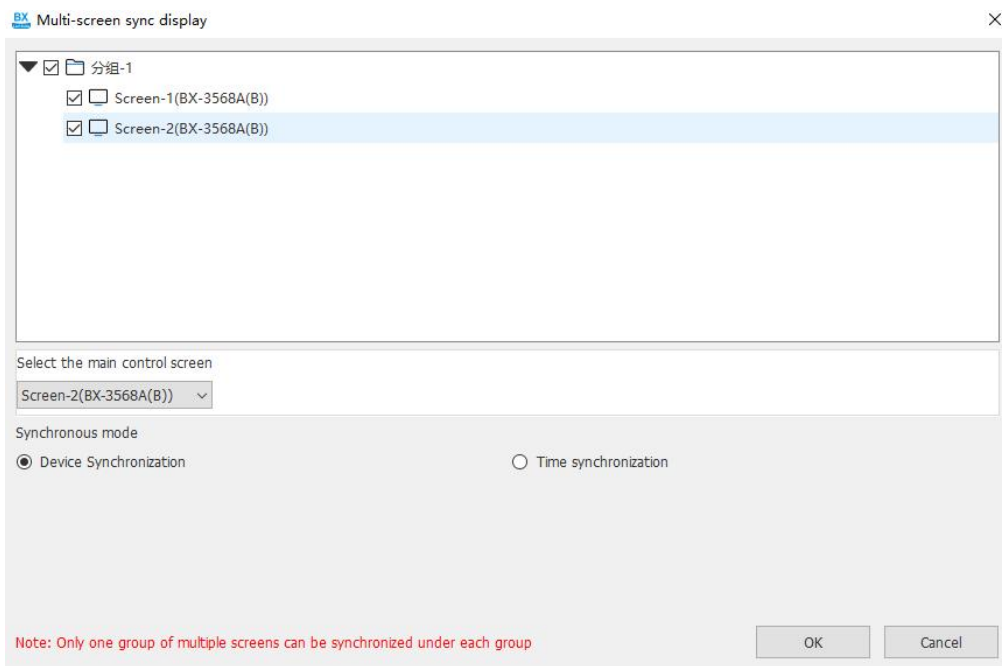
5. Multi-screen synchronization

To add two controllers, select one screen as the main screen, and then add a program, such as adding a video area under screen 1. After adding the program, select screen 1, right-click, and choose "Multi-screen synchronization".

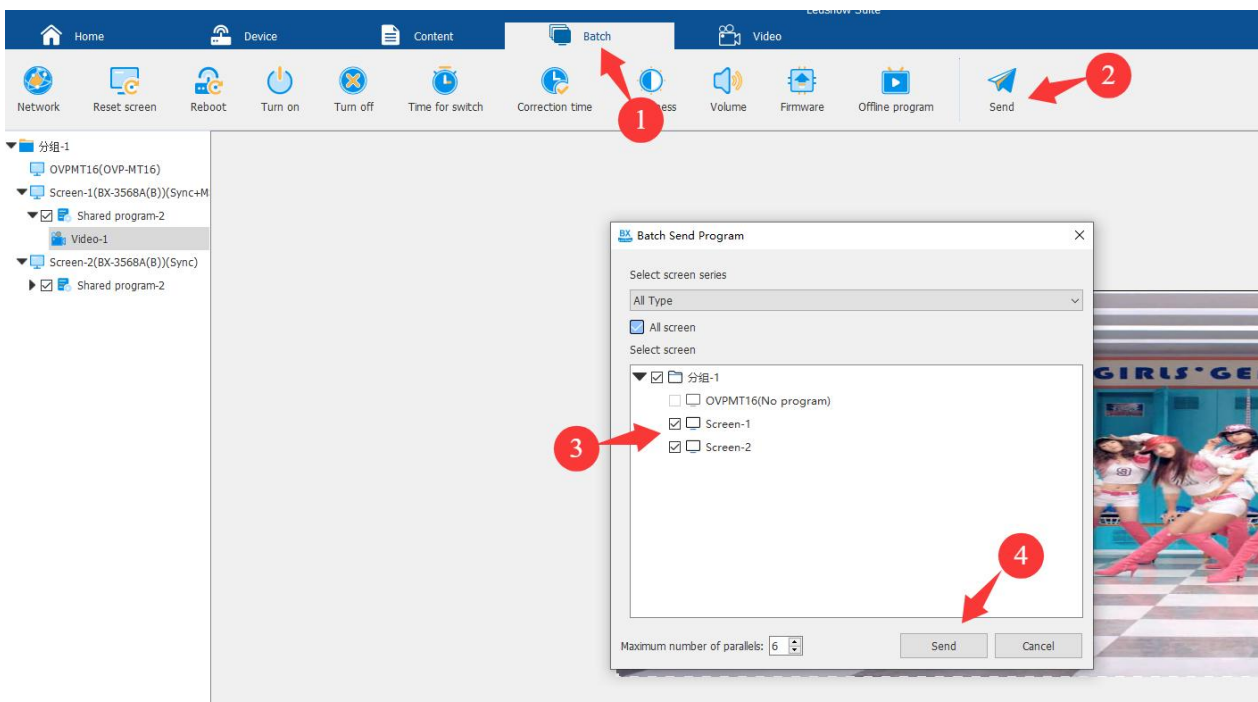


On the "Multi-screen Synchronization Display" interface, select the screens that need to be synchronized, choose the synchronization mode as either device synchronization or time synchronization, and click "OK" to complete.

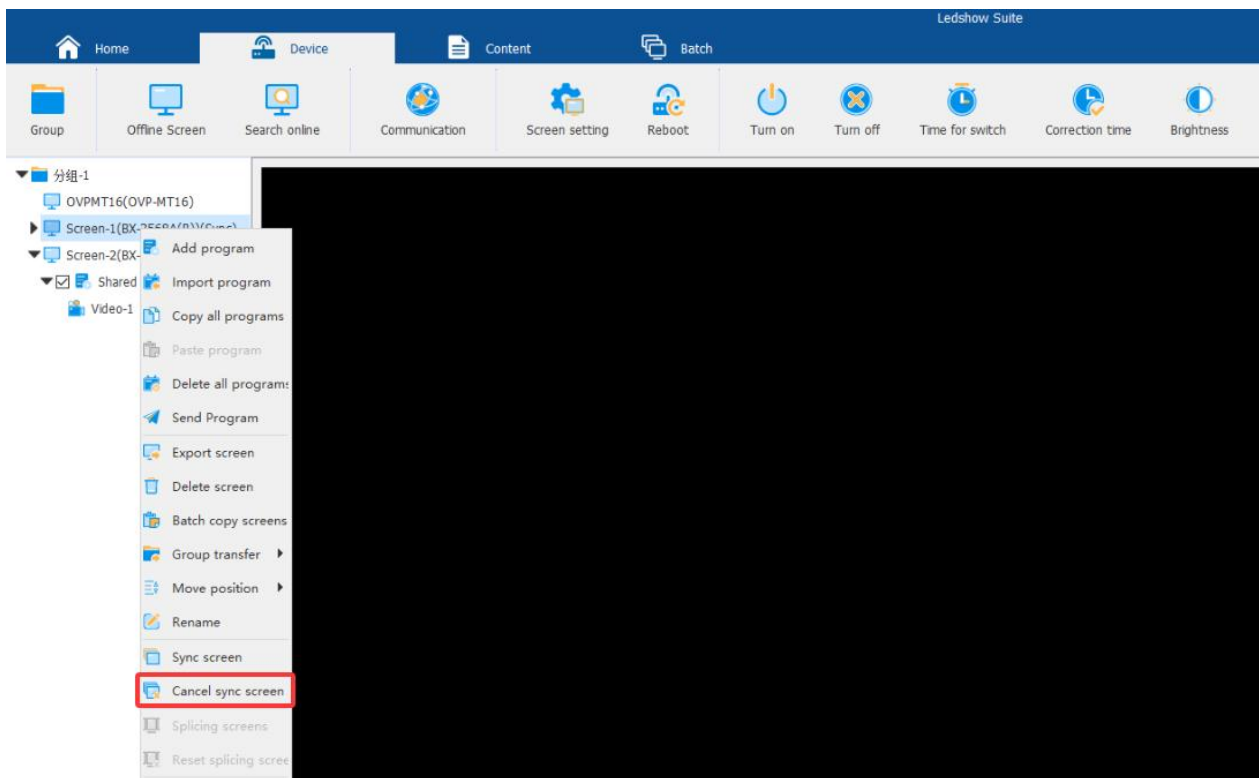
- Device synchronization: The default setting is device synchronization, which allows the same model of control cards on different screens to play programs synchronously.
- Time synchronization: Selecting time synchronization allows you to set the start and end times for synchronized playback of programs.



On the main interface, select the program on the screen that is the main screen, click "Batch" and then click "Send". Select the two cards to synchronize, and finally click "Send". Group sending is required .

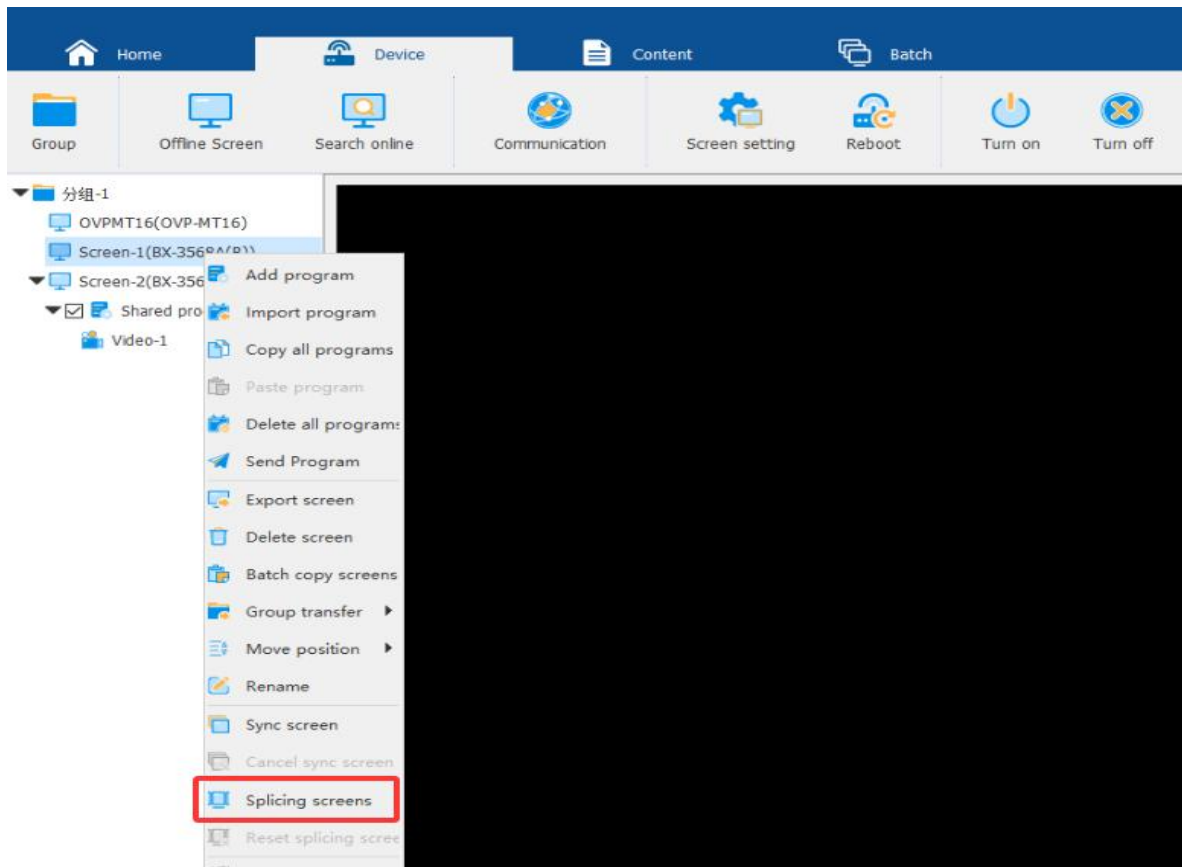


If you don't want to sync the programs, you can select the screen that is the main screen, right-click, and select "Cancel multi-screen synchronization".

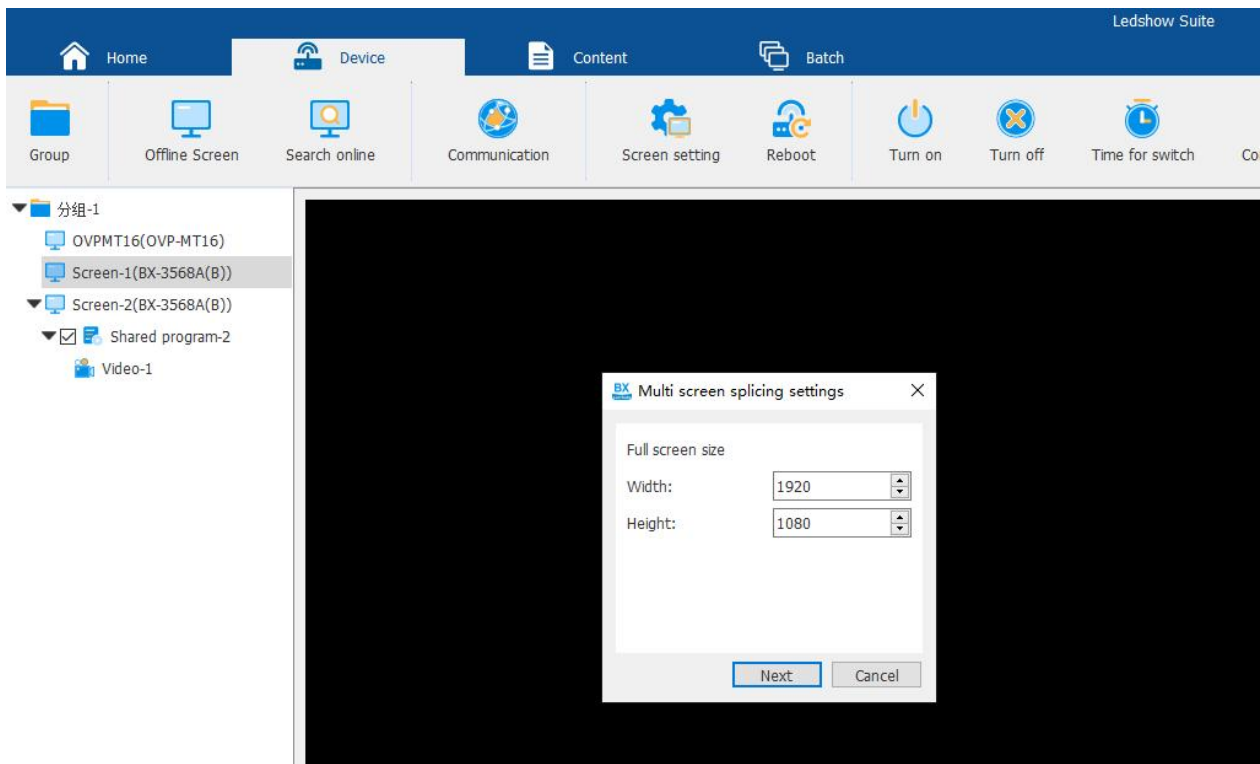


6. Multi-screen splicing

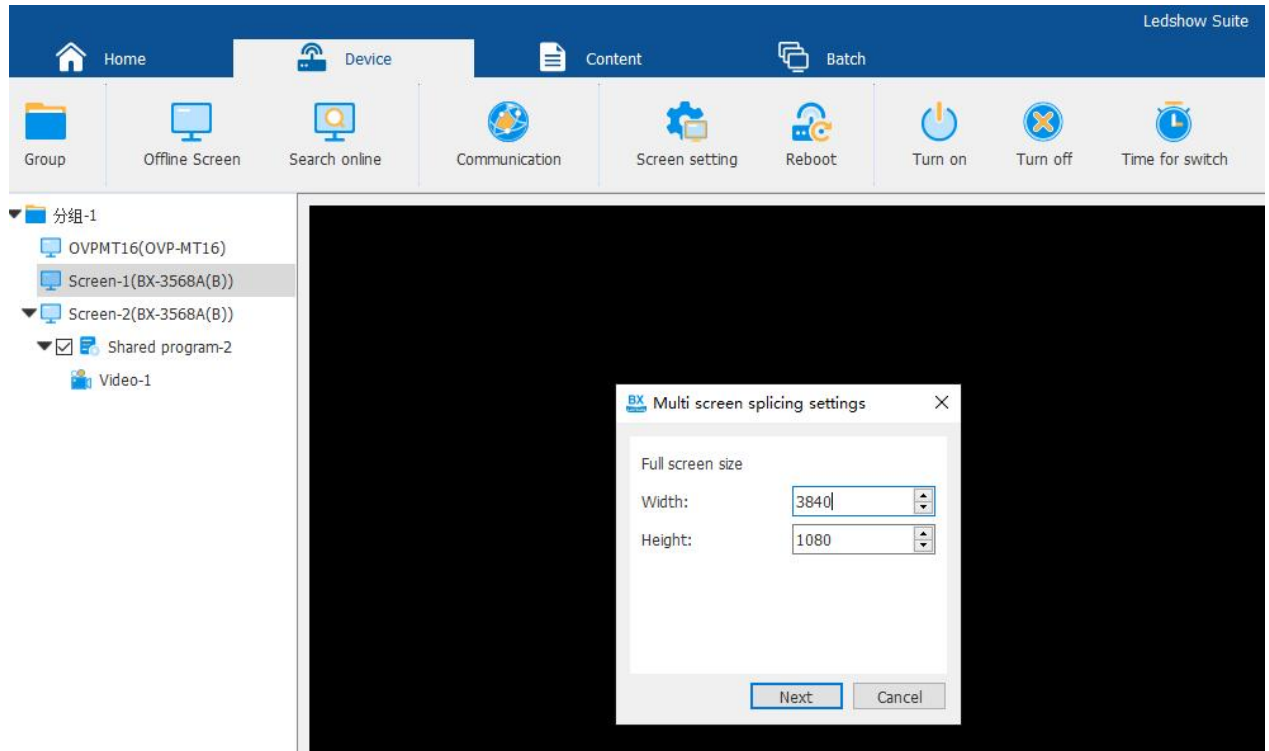
For example, if you need to add two controllers and splice two screens, select the first screen you want to splice, right-click and select " Splicing screens ".



In the pop-up multi-screen splicing interface, you can enter the total width and total height of the two screens that need to be spliced.

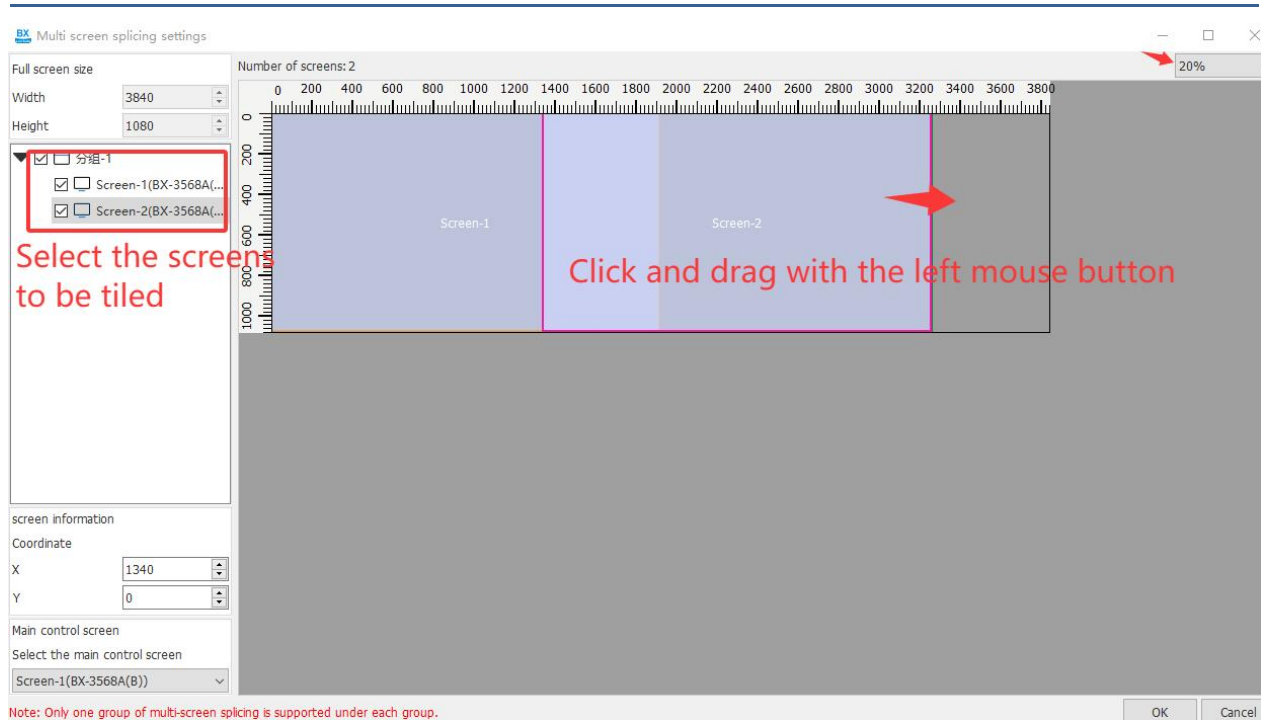


If the two screens to be tiled have a width of 1920 and a height of 1080, and they need to be tiled horizontally, add the width values together to get 3840, leaving the height unchanged. In the multi-screen tiled interface, enter 3840 after the width and 1080 after the height. Click "Next".

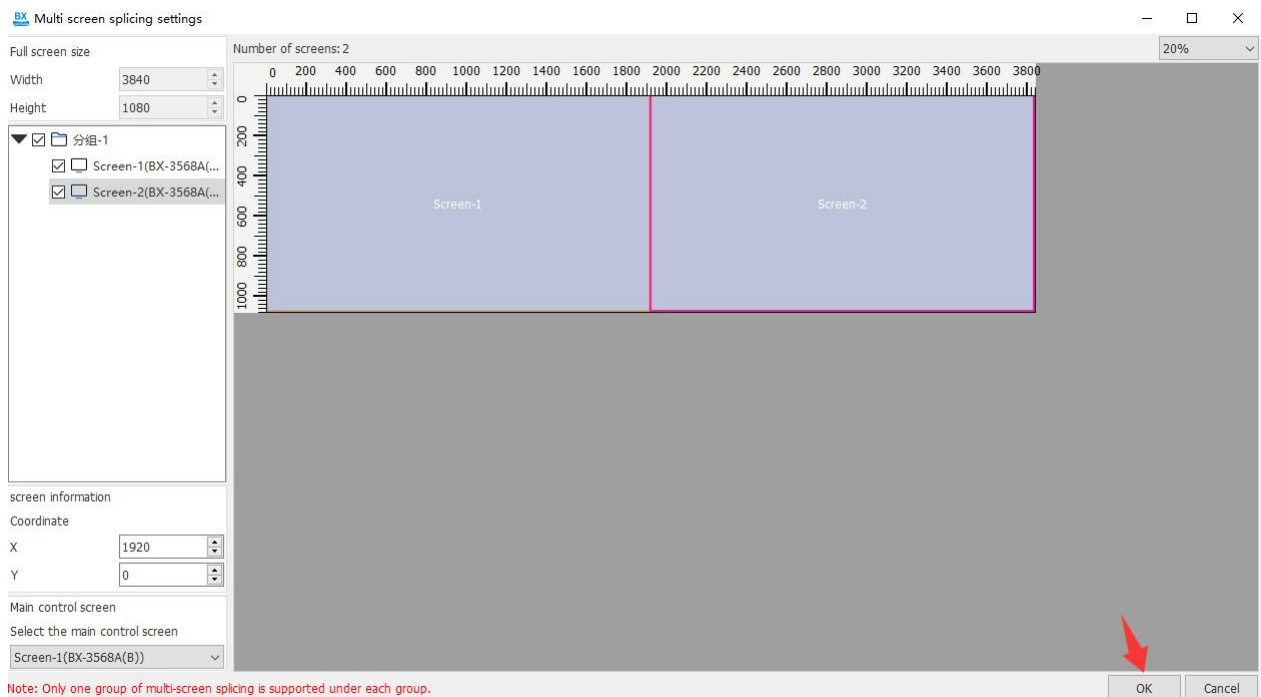


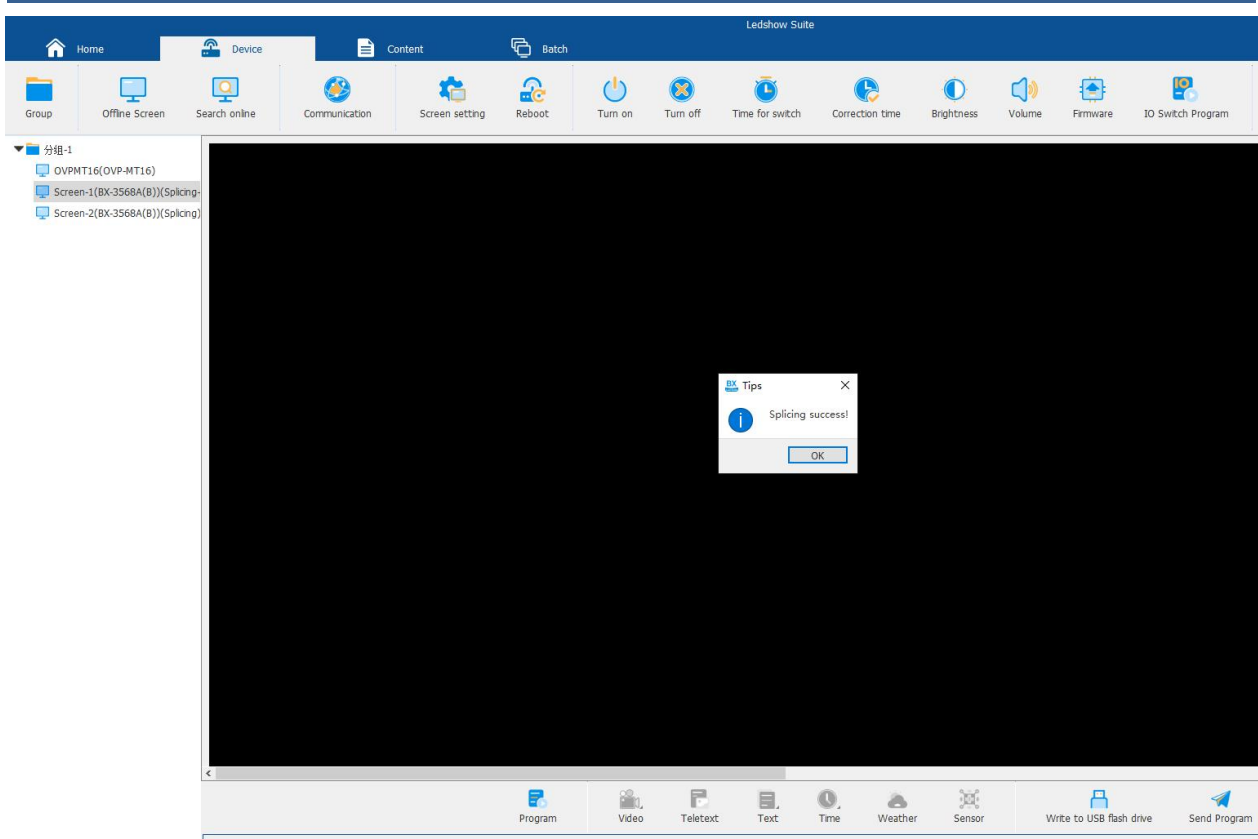
When there are many screens to be spliced, you can select 20% the display ratio and view all the screens.

In the "Multi-screen splicing" interface, first select the screens you want to splice, then click and hold the left mouse button and drag the screens to the desired positions.

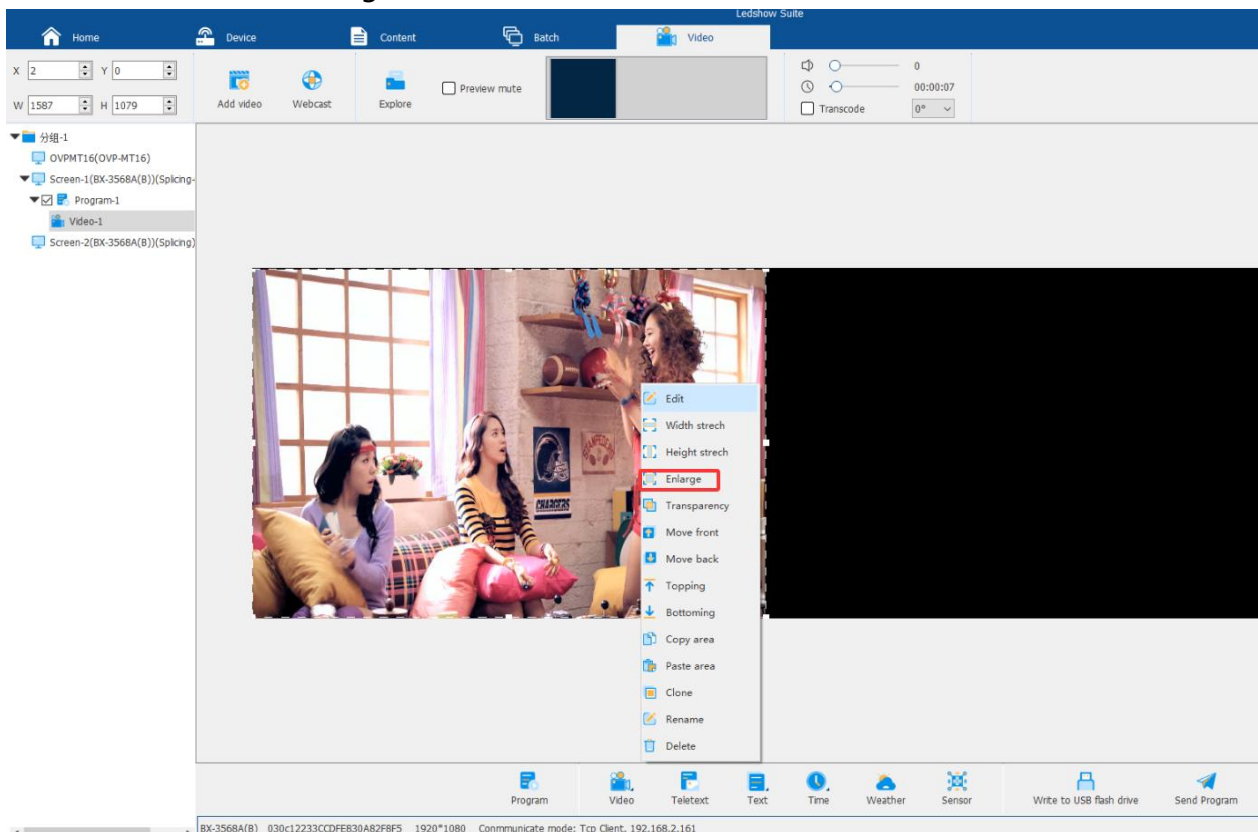


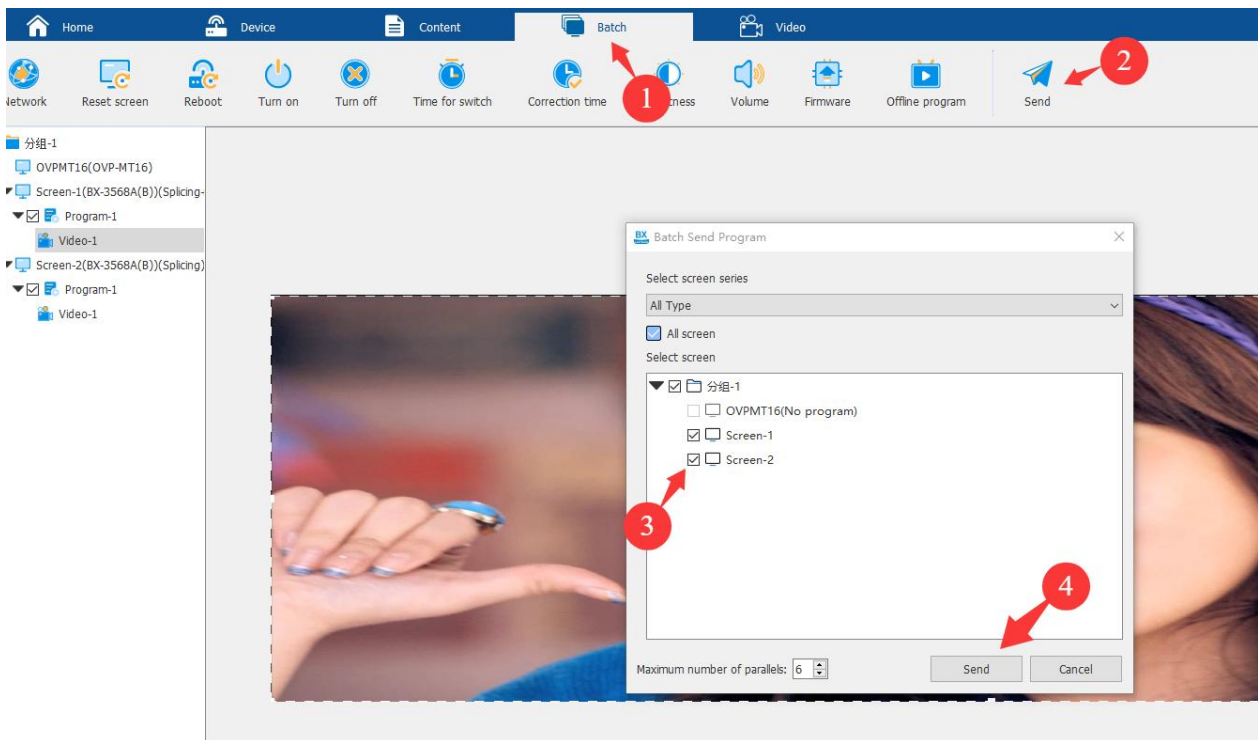
Once all the screens that need to be spliced have been dragged to the appropriate positions, click "OK" in the lower right corner to complete the splicing settings.





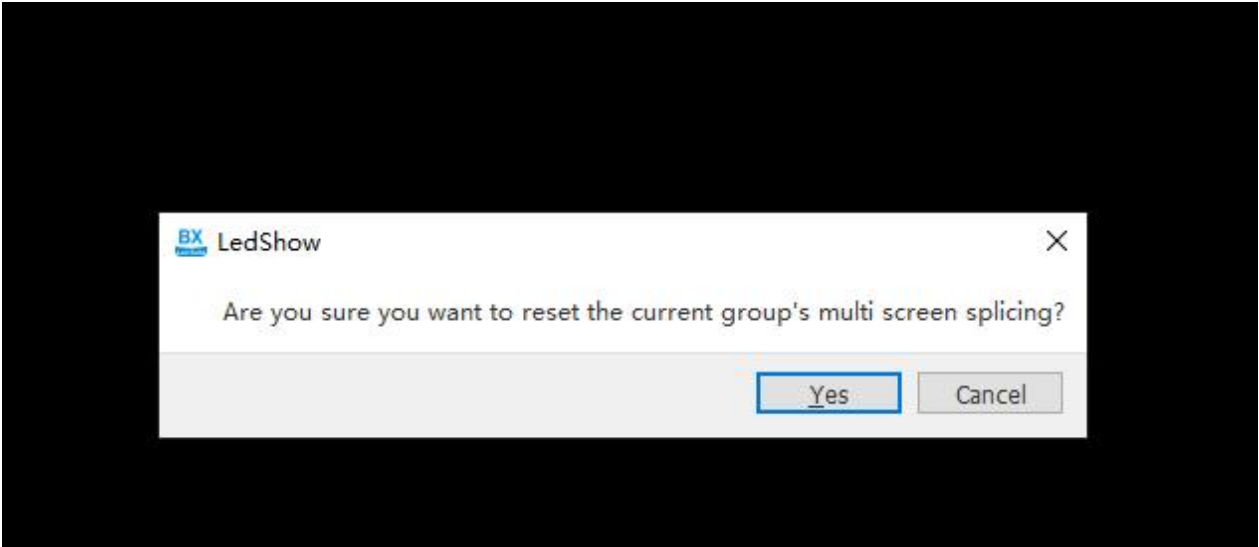
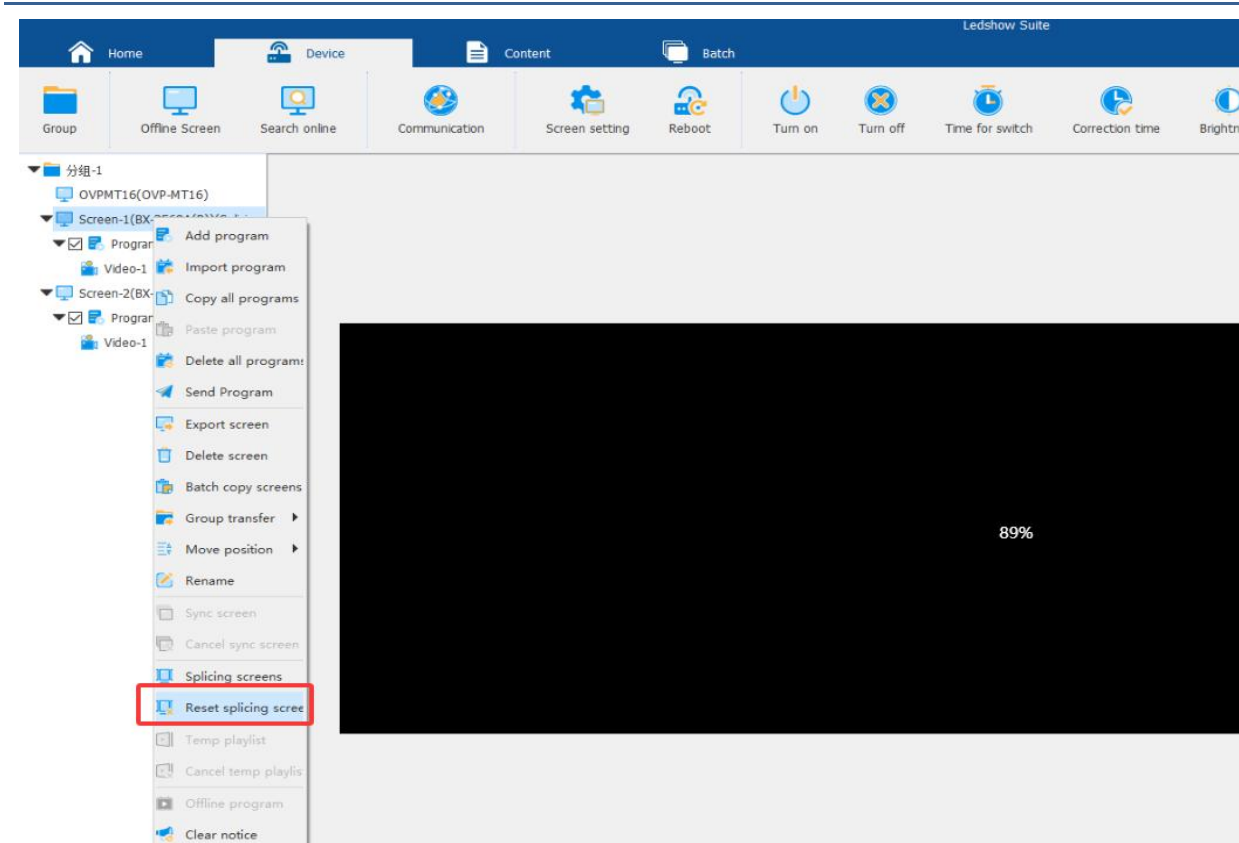
On the main interface, first select the main screen that needs to be spliced, add a program, such as adding a text and image area, and then right-click on the program preview interface and select "Enlarge".

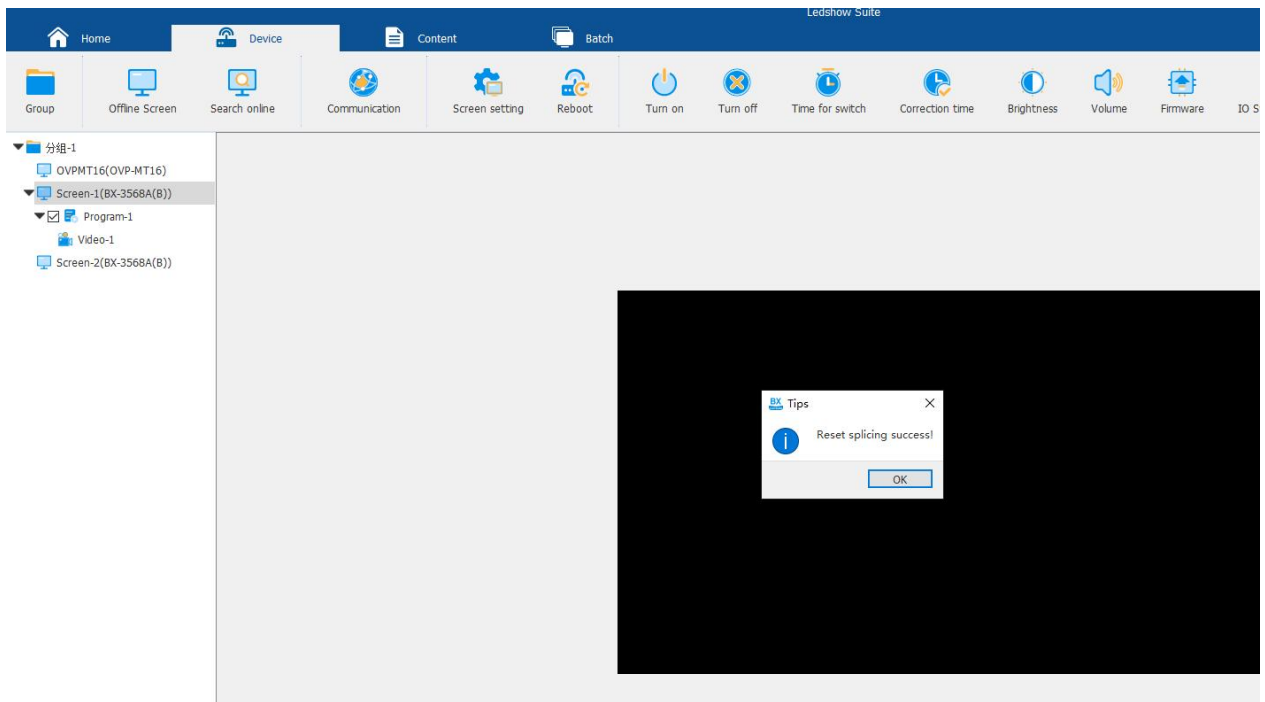




On the main interface, select the program under the screen that is the main screen, click " Batch " and then click "Send", check the two cards to be spliced, and finally click "Send". Group sending is required .

If you don't want to splice the screens, you can select the screen that is the main screen, right-click, and select " Reset splicing screen " to reset the multi-screen splicing.





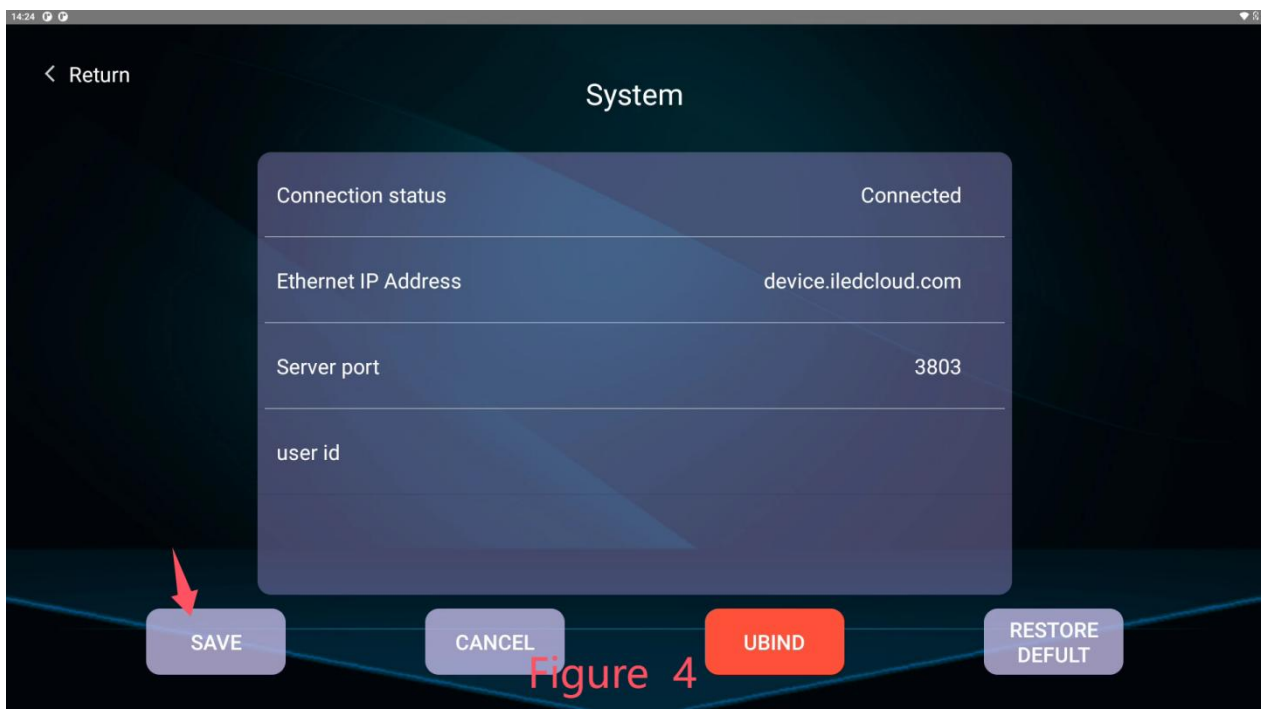
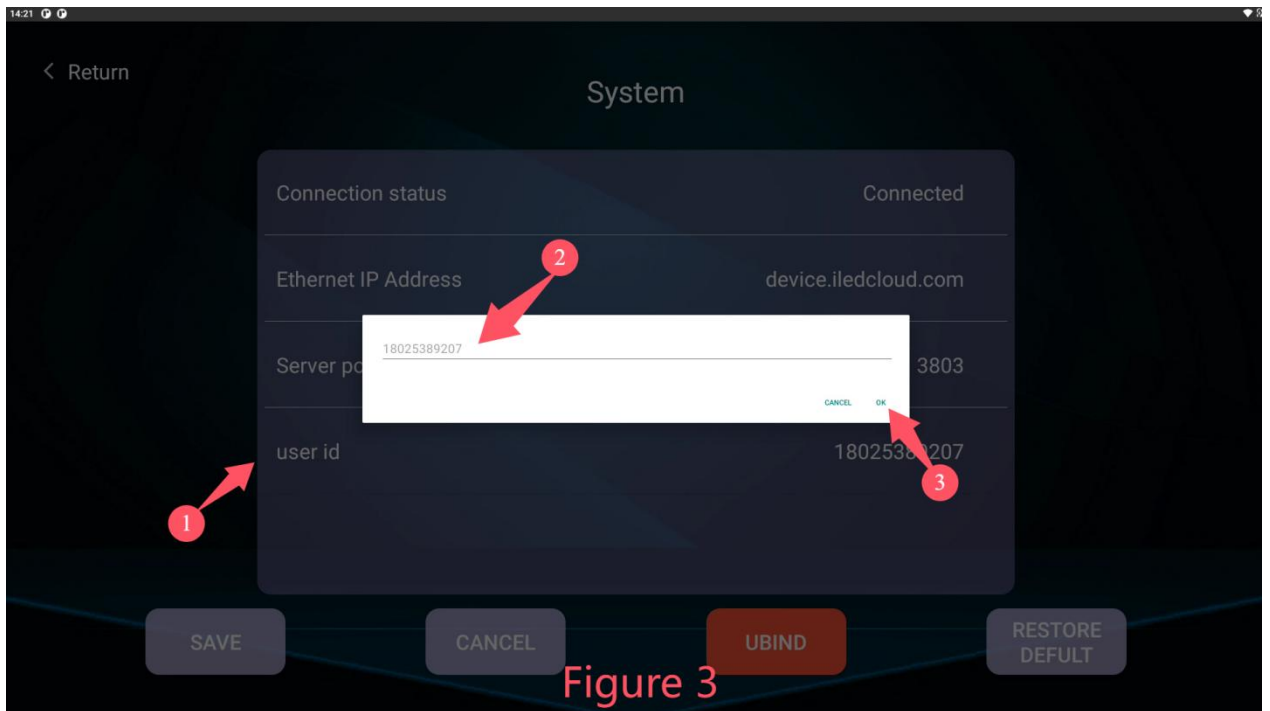
Cloud platform configuration

1. Android motherboard bound to cloud platform

After the Android motherboard is connected to the network, open the "BxPlayer" messaging software (Figure 1). Click the left mouse button three or more times in any of the four corners or press and hold the left mouse button to enter the "BxPlayer" messaging settings page, as shown in (Figure 2).



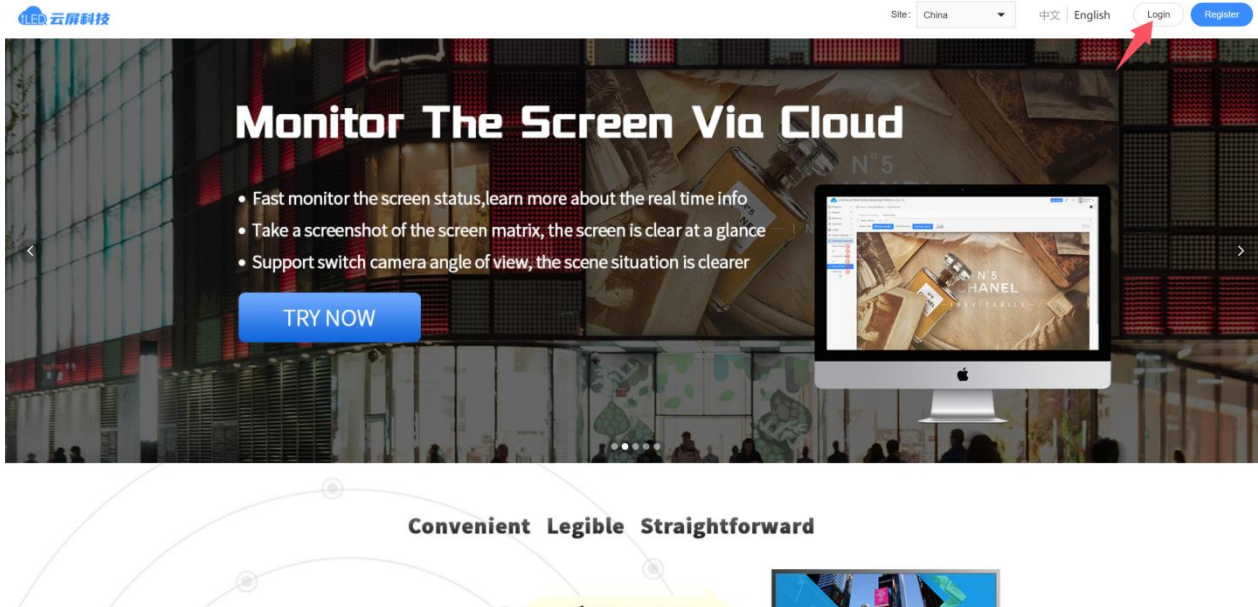
Click “System” to enter the cloud platform binding (as shown in Figure 3), click “user id”, enter the mobile phone number or email address bound to the cloud platform, and then click “OK” to display Figure 4.



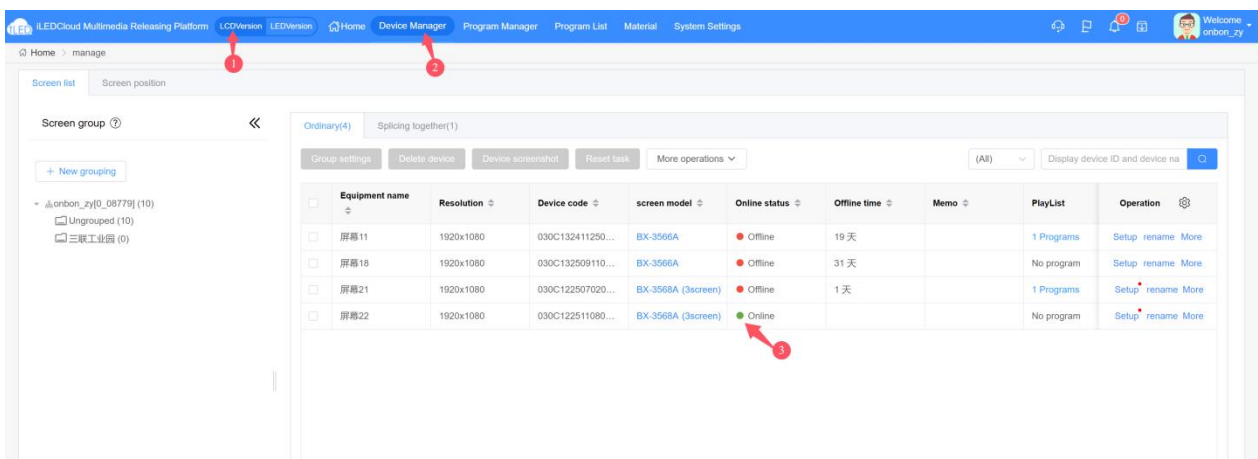
After clicking "Save" in Figure 4, the binding is successful. Exit to "Figure 1" and log in to the cloud platform to find this device.

2. Log in to the cloud platform

https://www.iledcloud.cn/indexC.html in the address bar to access the iledcloud information management platform login interface .



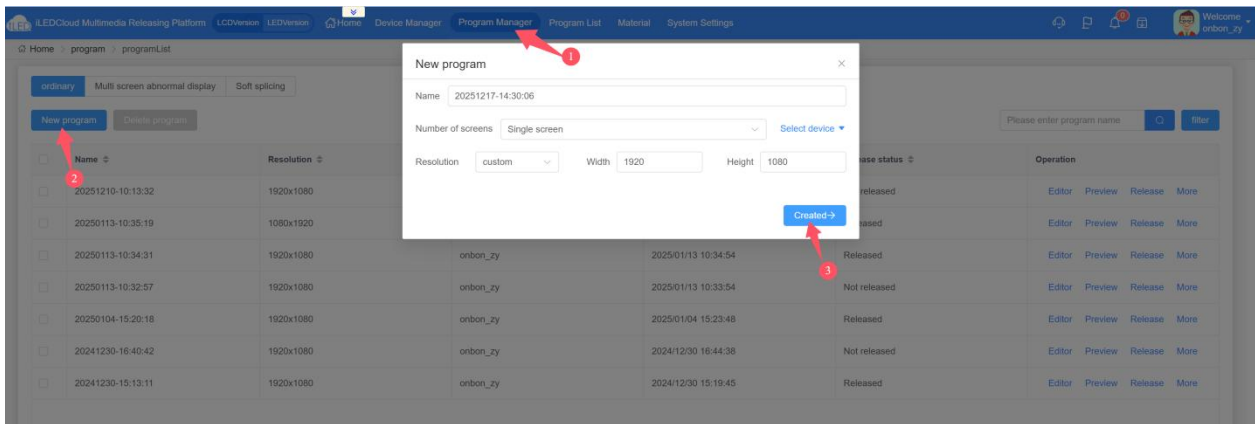
On the main interface , first click "LCD Commercial Display Edition" to enter the main page of the commercial display edition , then click "Device Management" to enter the device management page. Here, the Android motherboard we just bound will be displayed, such as "Screen 22" which will be shown as online.



3. New Program

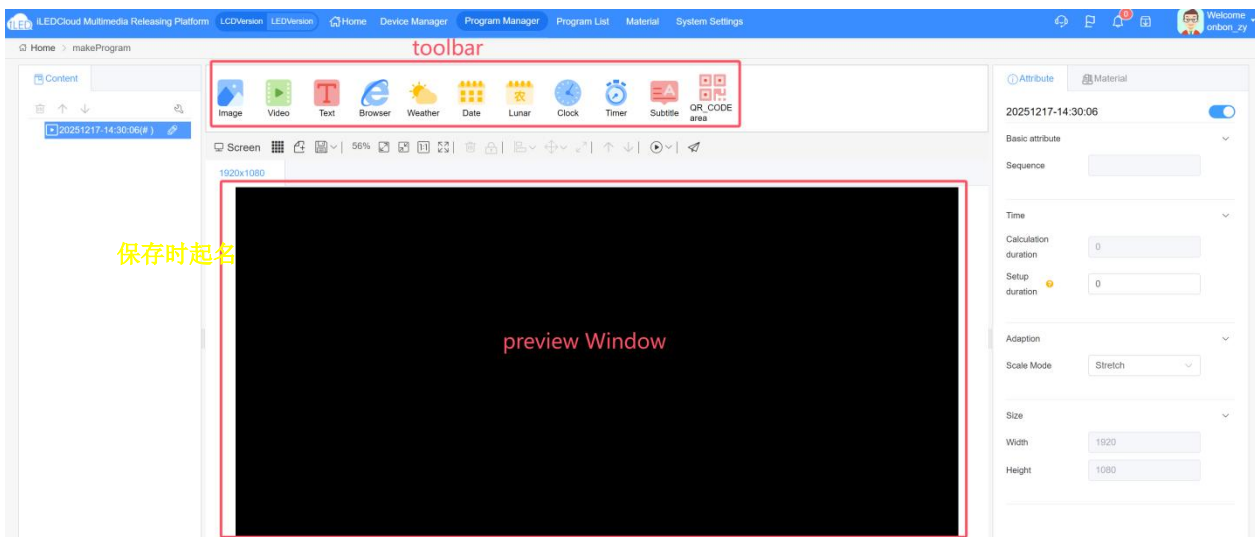
Switch to "Program Management" : Click "Program Management ", then click " New

Program ". In the New Program dialog box, select the number of screens, such as "Single Screen". Enter the resolution according to the resolution of the added screens, and finally click "Create".

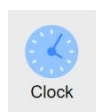


4. Add program

After creating a new program, the page will take you directly to the program editing page. Clicking the toolbar at the top allows you to add multiple areas, images, videos, text, etc., and you can edit the program as needed.

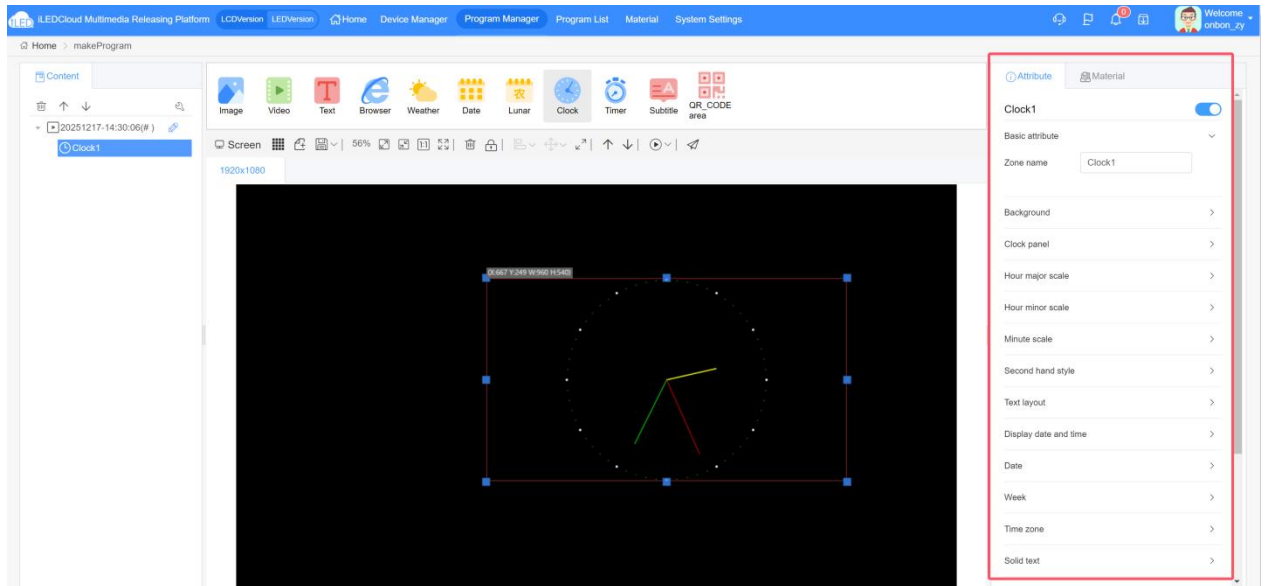


5. Editing programs



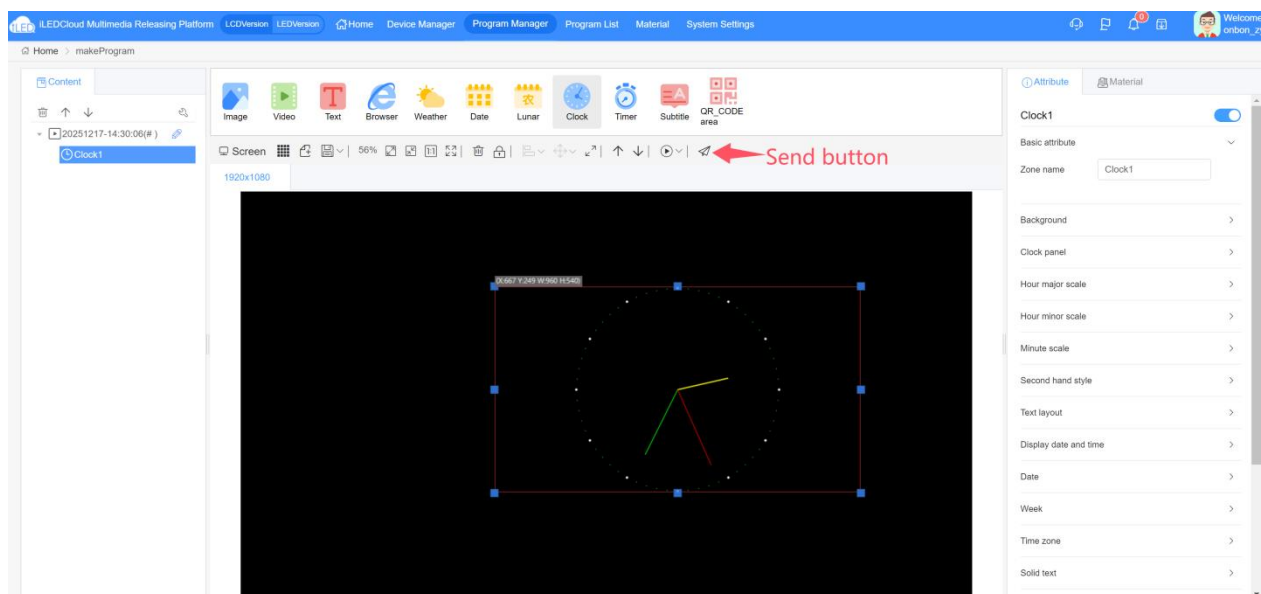
For example, to add a clock face, move the left mouse button to "clock", hold down the left mouse button and drag it to the program's "preview window", then release the

left mouse button . In the "Properties" section on the right side of the preview window, you can edit the clock face's properties, such as whether the clock face style is round or square, the hour markers, minute markers, second markers, text layout, display date and time , etc.

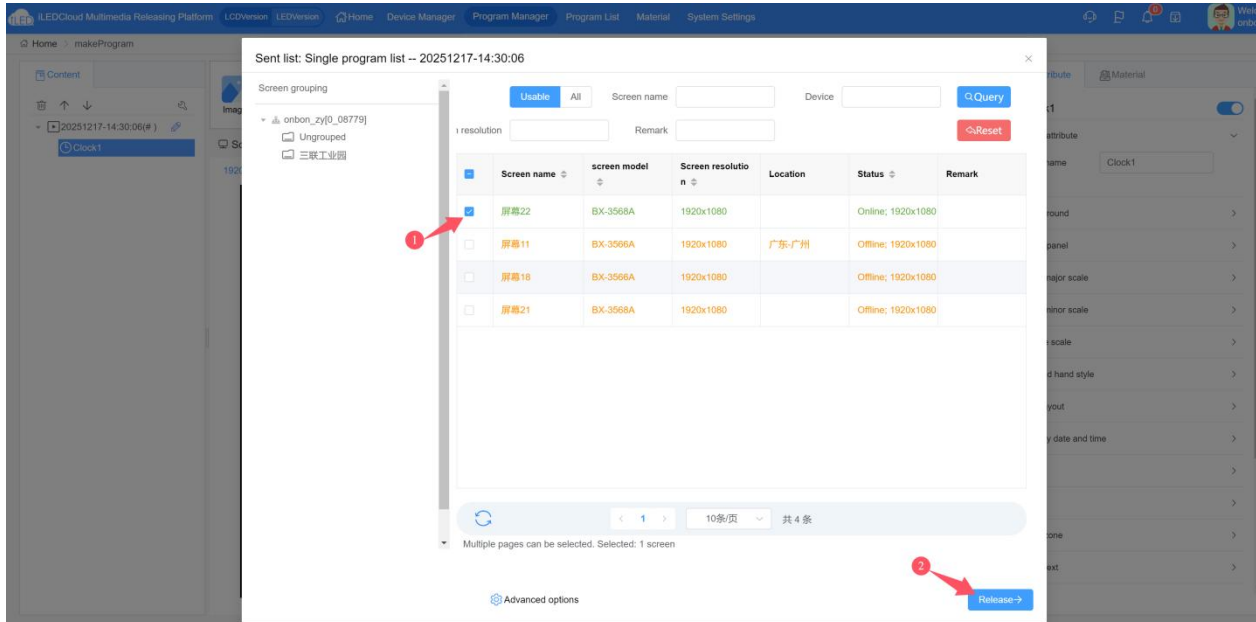


6. Release program

After adding the program, click the "Publish Program" button.



In the pop-up dialog box, click " OK " and enter a name in " Name ". A selection interface will appear to choose the controller to send to. Select the controller and click " Release " to send successfully.



LEDsuit APP Configuration


Note: If you need to control the commercial display motherboard via the APP, you must first open the BxPlayer player and then perform the device search.

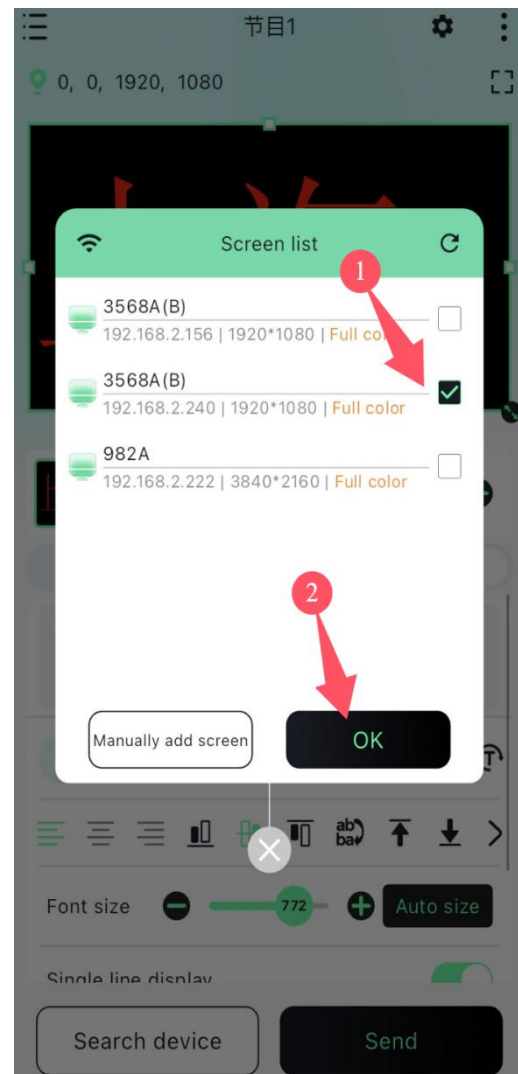
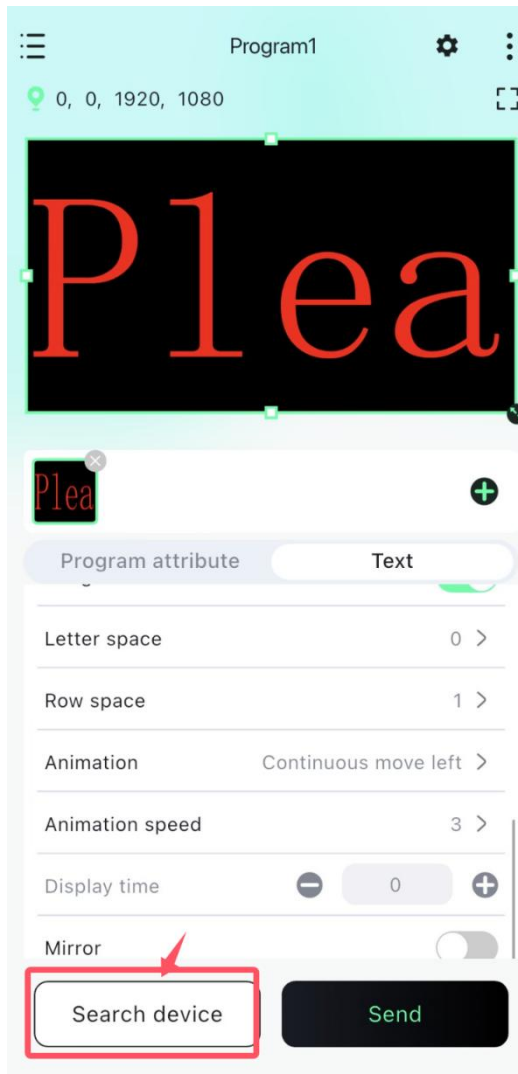
1. Connect control card

The control card is connected to the wireless router, and the router then connects to the control card. You can then find the local area network (LAN) name in your phone's Wi-Fi settings and connect to it to access the LAN.




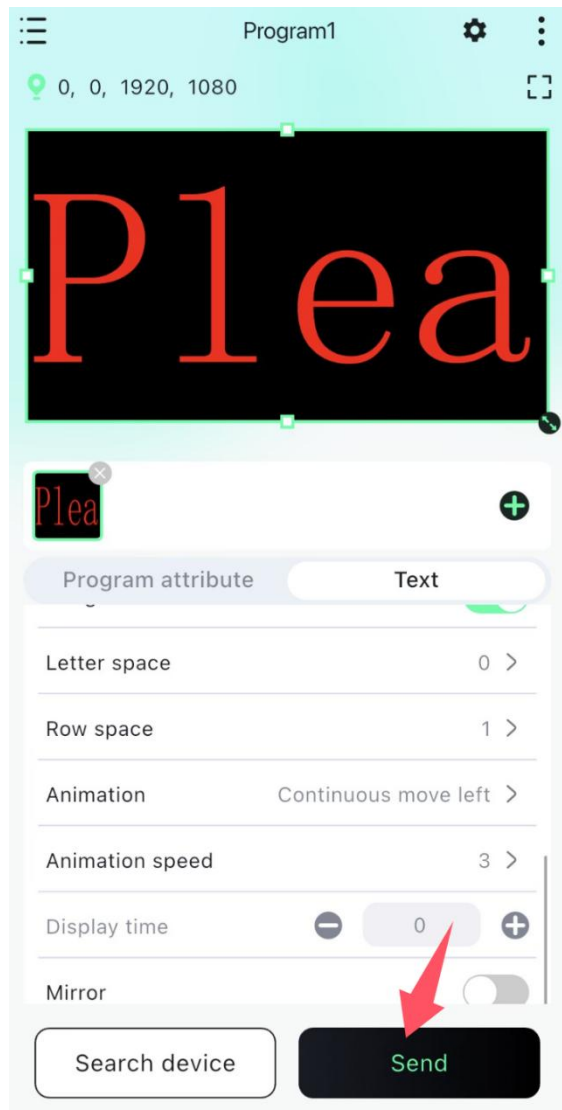
2. Add screen

On the main interface of the software, click "Search," then click the search icon in the "Screen List" interface  to automatically search for online control cards. Select the 3568A control card and click "OK" to complete adding the screen.

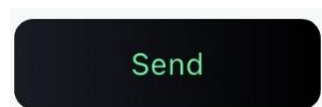


3. Editing programs

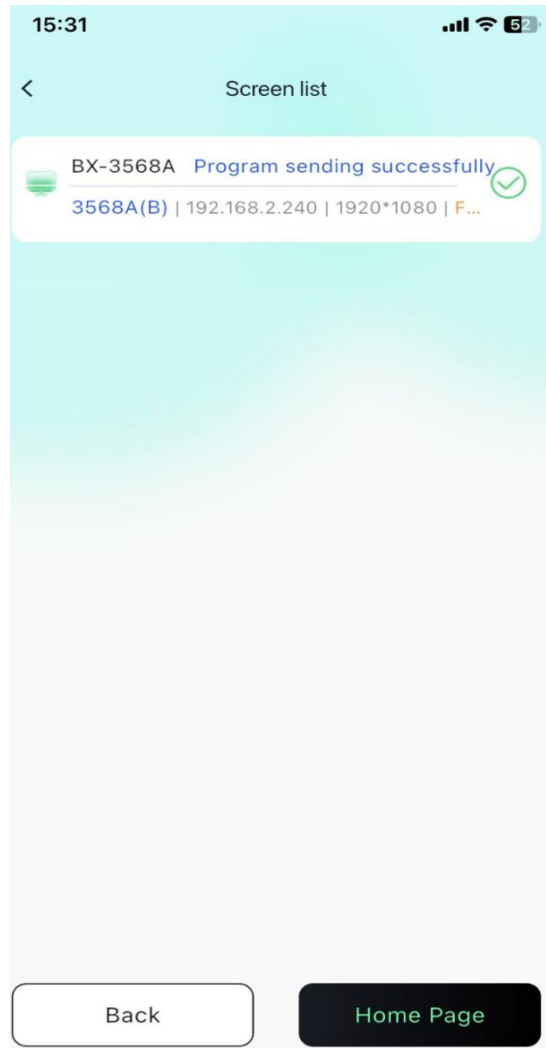
After adding the screen, you will enter the program editing interface. You can click  to add various areas. Here, we choose to add a text area. In the text editing area, you can modify the text content, and in "Program Properties," you can modify some program playback parameters.



4. Program sent



After editing the program, click the send button to enter the send list. Select the corresponding controller to send the program. After the prompt, the display screen will show the program normally, as shown in the following figure:

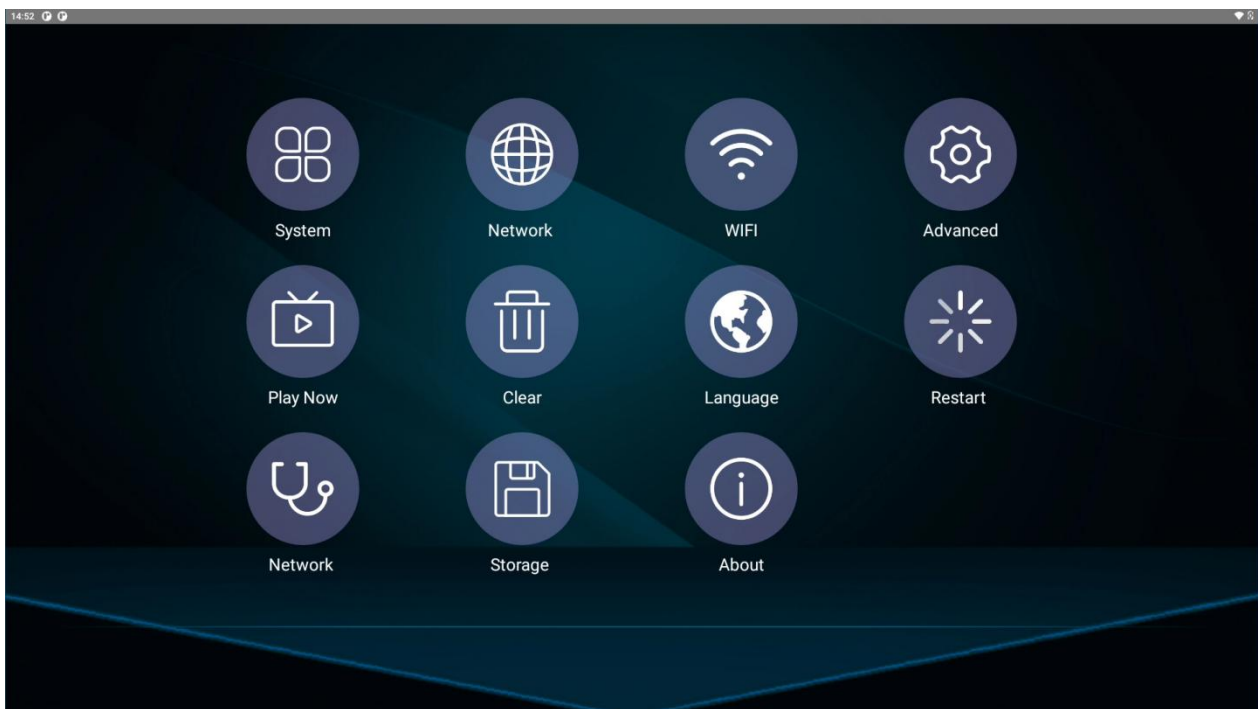


LCD signal transmission control

Tap screen 5 on the initial screen to enter the LCD signal transmission main interface.

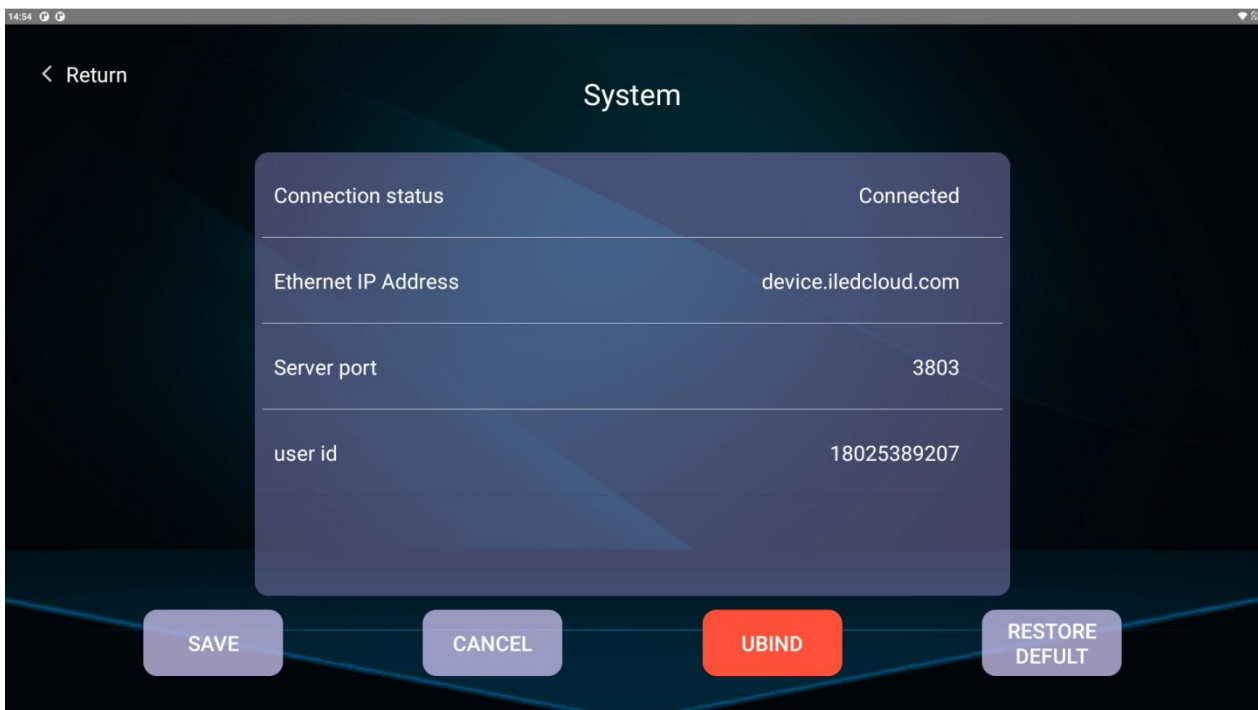
1. Sending main interface

The LCD control main interface is divided into Cloud Mode , Network Configuration , WiFi Hotspot, Advanced Options, Play Now, Clear Programs, System Language, Restart System, Network Diagnostics, Storage Location, and About.



2. System

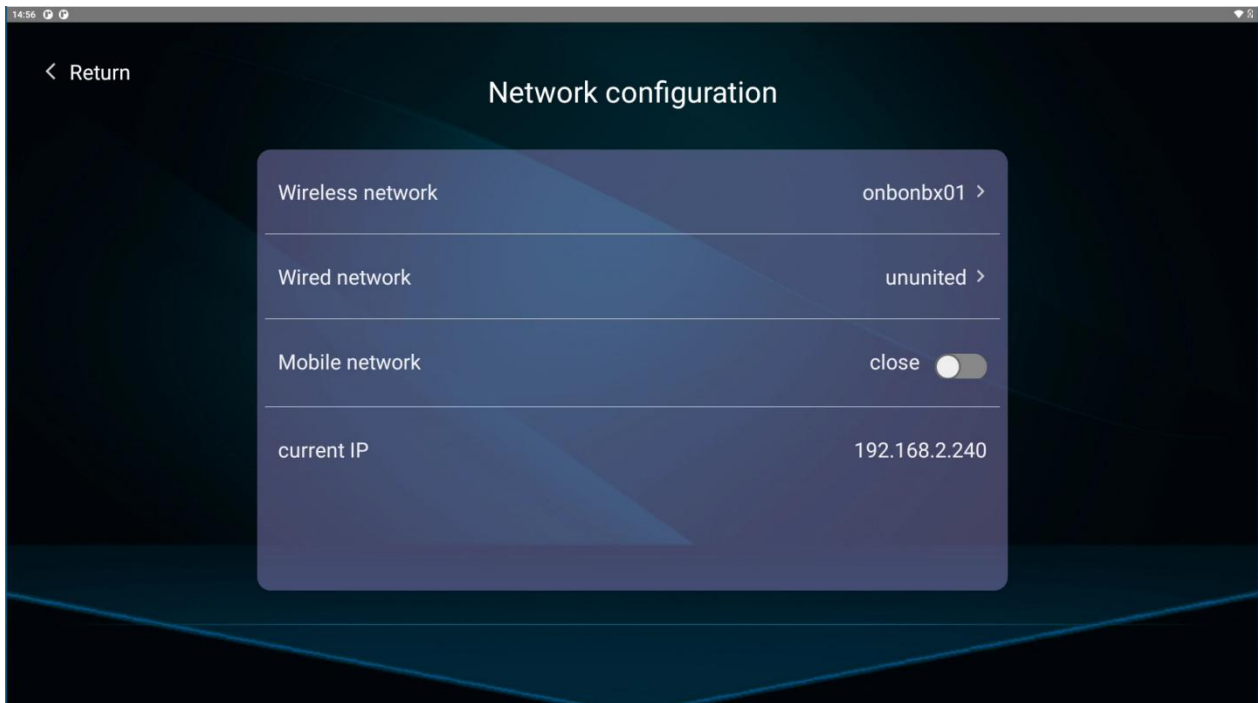
Clicking "Cloud Mode" will display the control card's connection status, server address , server port, username, and ID .



Add the mobile phone number or email address used when registering with the cloud platform to the "user id" field, then click "OK", and then click "SAVE" to successfully bind the account .

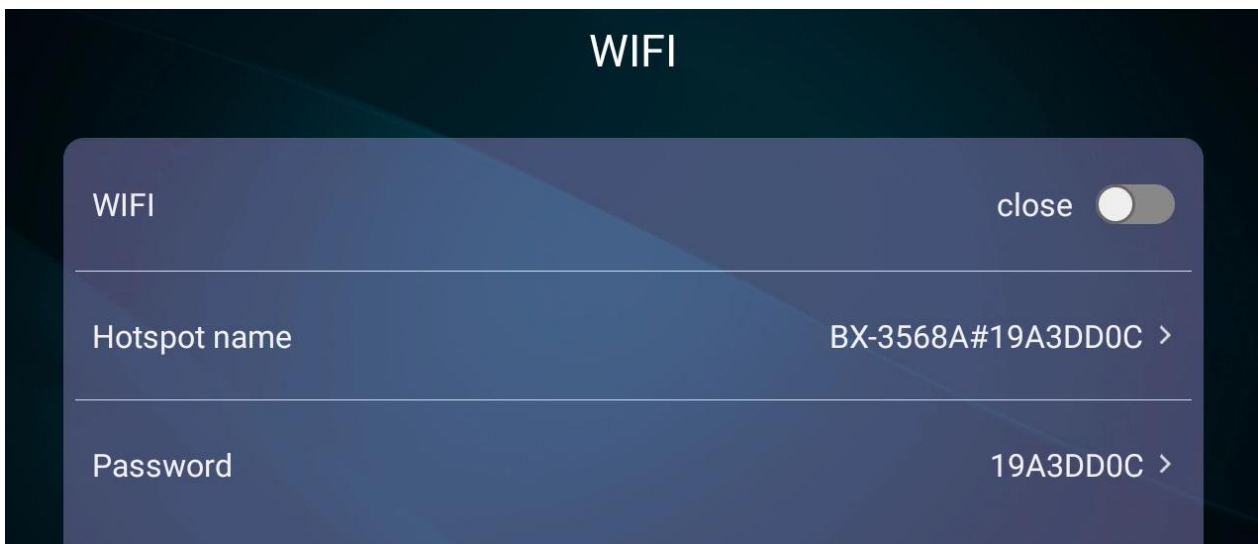
3. Network

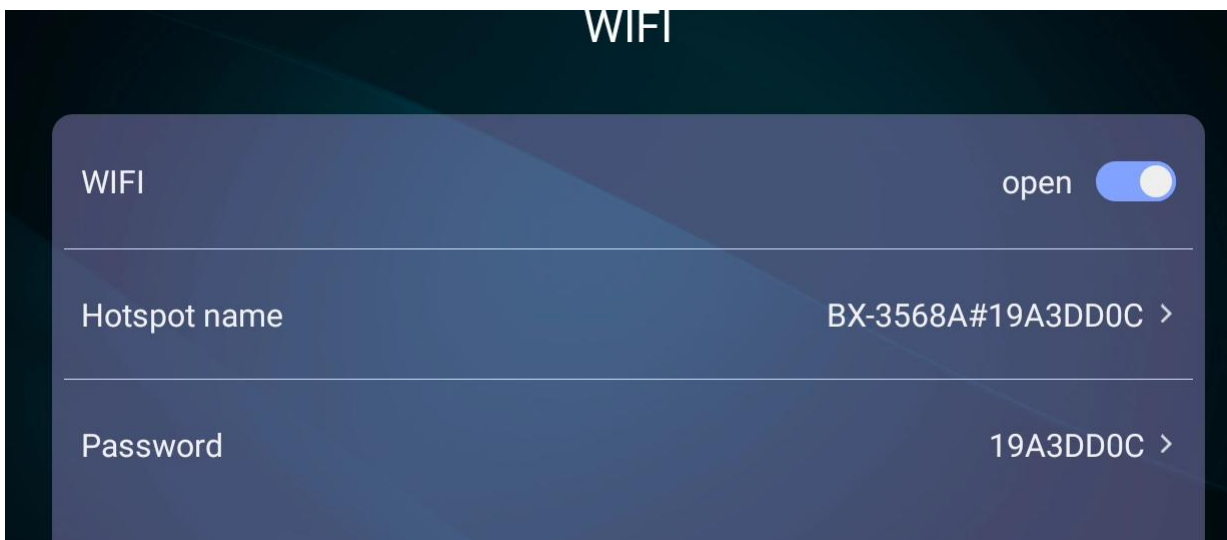
Clicking "Network Configuration" will display the network configuration information for the control card. You can choose to enable or disable the wireless network and mobile network. See the image below.



4. WiFi

Clicking "WiFi Hotspot" allows you to turn the WiFi hotspot on or off, as shown in the image below.

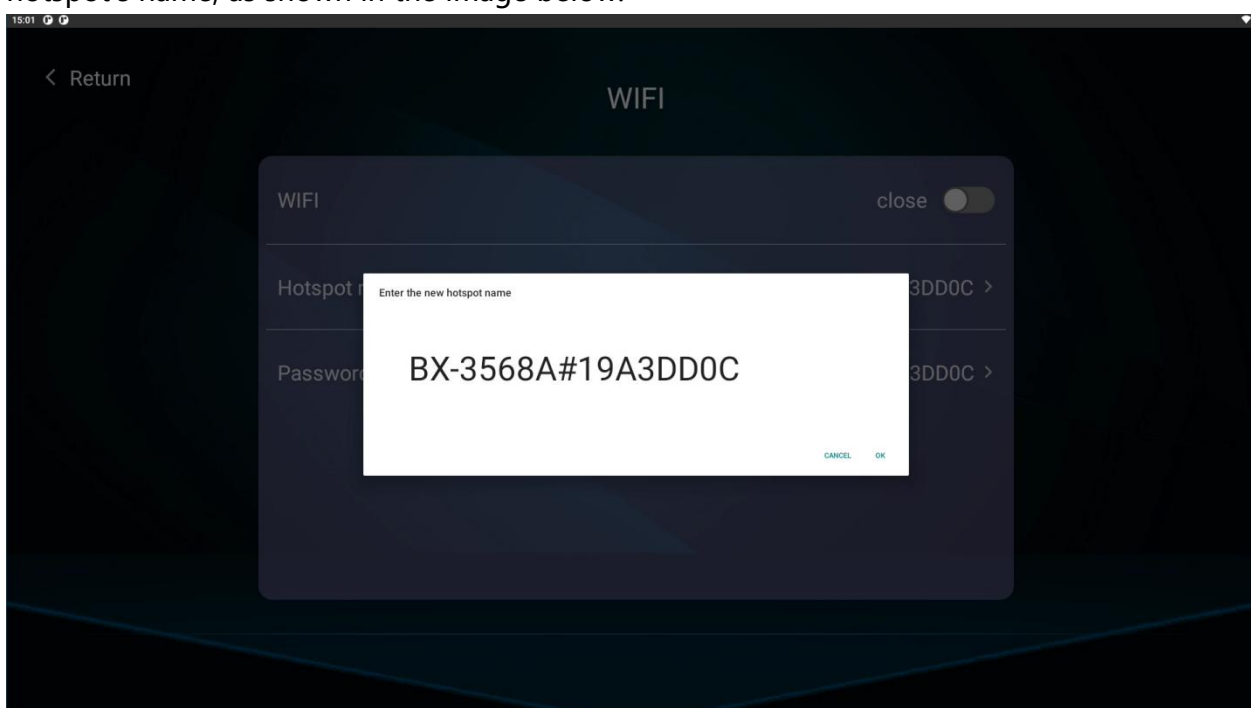




Once the WiFi hotspot is turned on, users can find it in their phone's "Wi-Fi" settings, as shown in the image below:

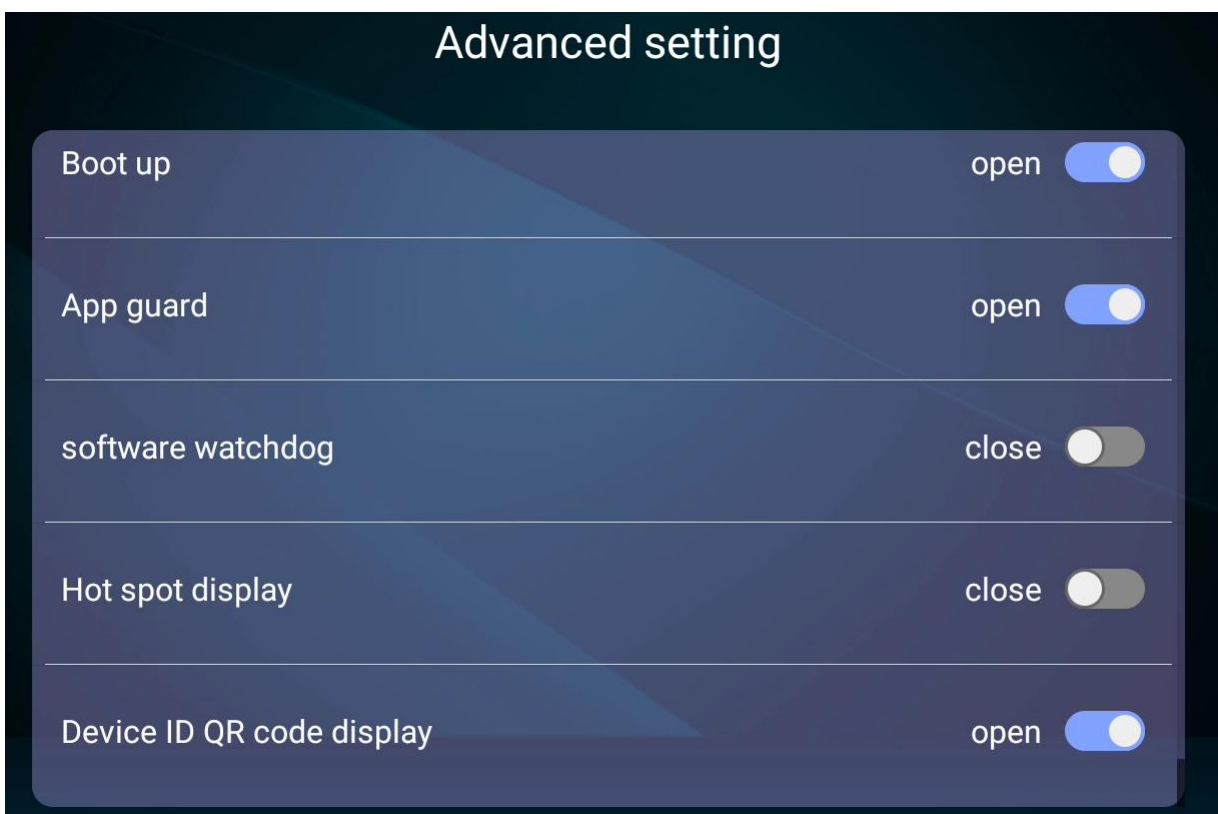
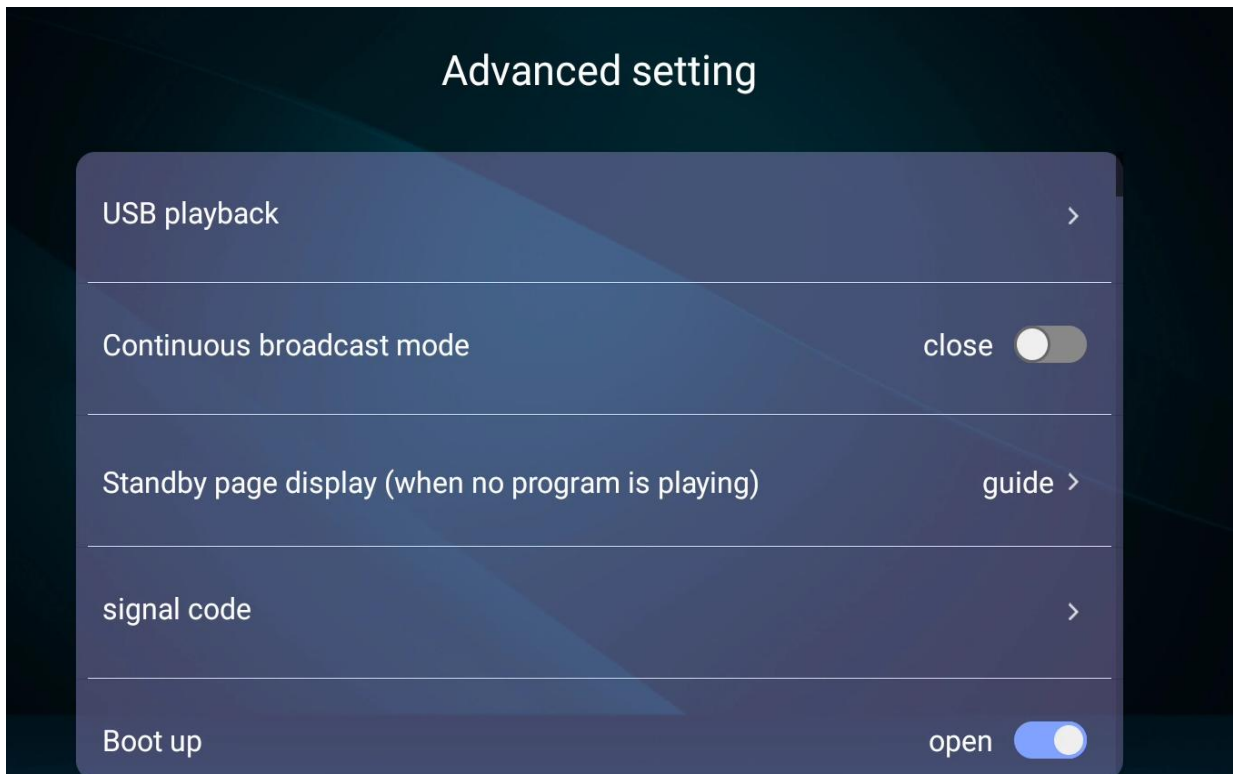


turning off "WiFi Hotspot", you can directly click "Hotspot Name" to change the hotspot's name, as shown in the image below:



5. Advanced

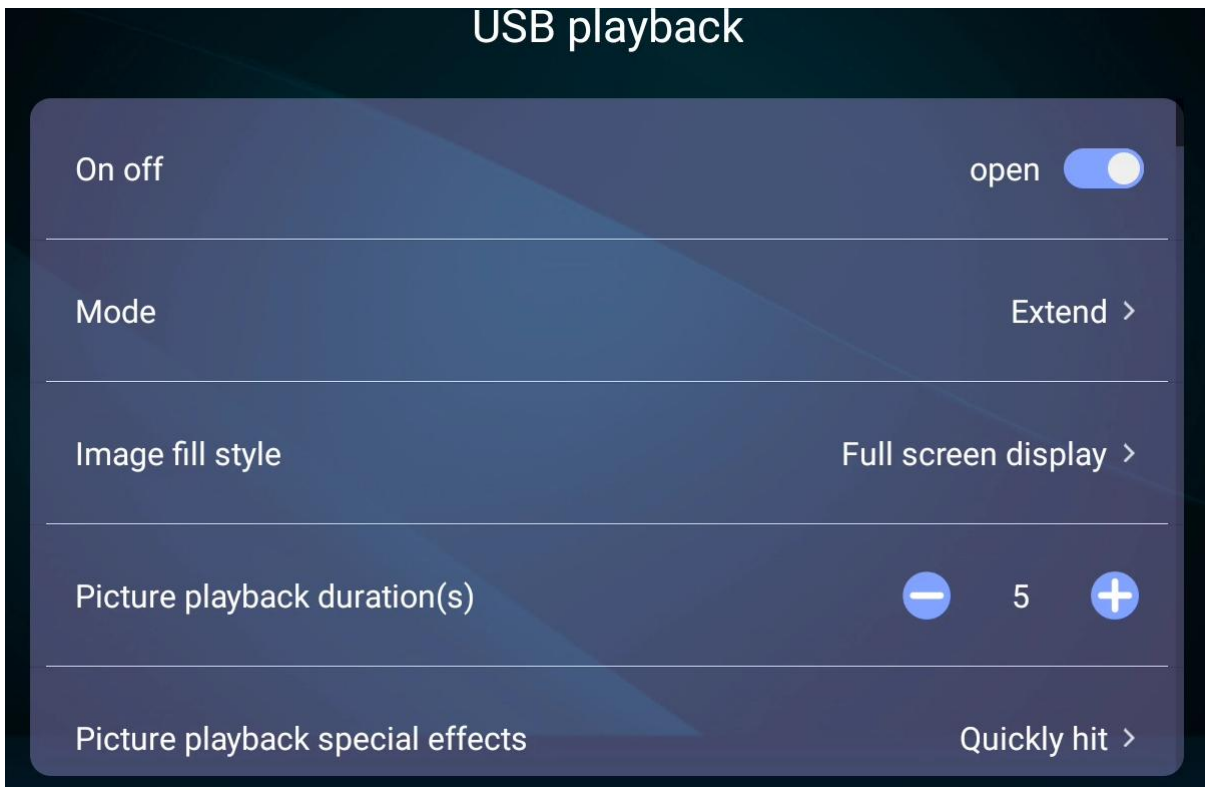
The advanced options interface allows you to configure settings for USB drive playback , resume playback mode, standby page display , communication password , startup , APP protection , software watchdog , WiFi hotspot display , and device ID QR code display .



- **USB playback**

The default setting is extended mode: directly plays videos and pictures from the USB drive. It can be changed to copy mode: copy mode copies pictures and videos from the USB

drive to the Android motherboard's memory for playback. The default image fill style is full-screen mode, which can be changed to proportional scaling. The default image playback duration is 5 seconds. Image playback effects and other features can also be modified.



6. Play Now

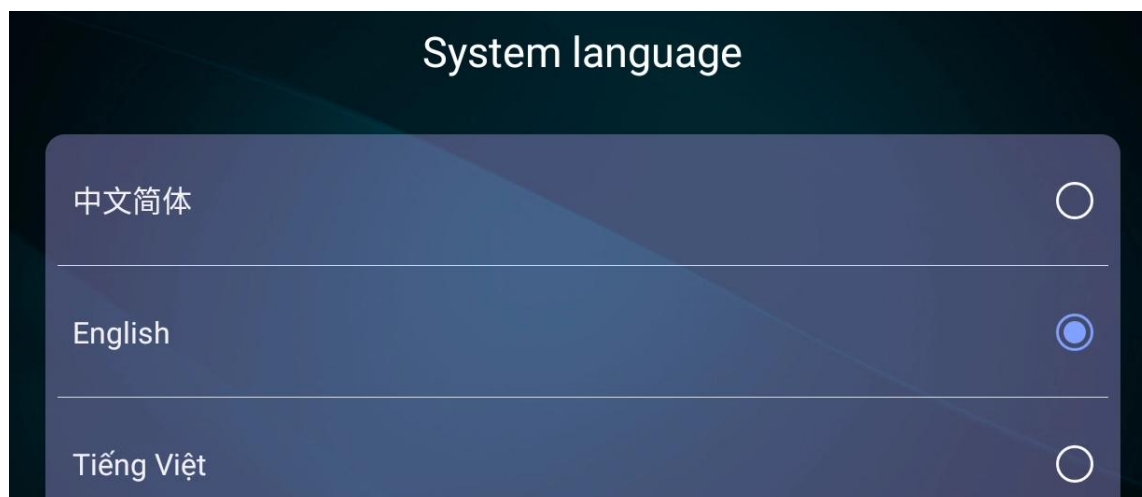
When a video program is saved in the control card, click "Play Now" and the video program will play on the LCD screen.

7. Clear

Clicking "Clear Programs" will clear all programs on the control card.

8. Language

You can choose between Simplified Chinese or English.

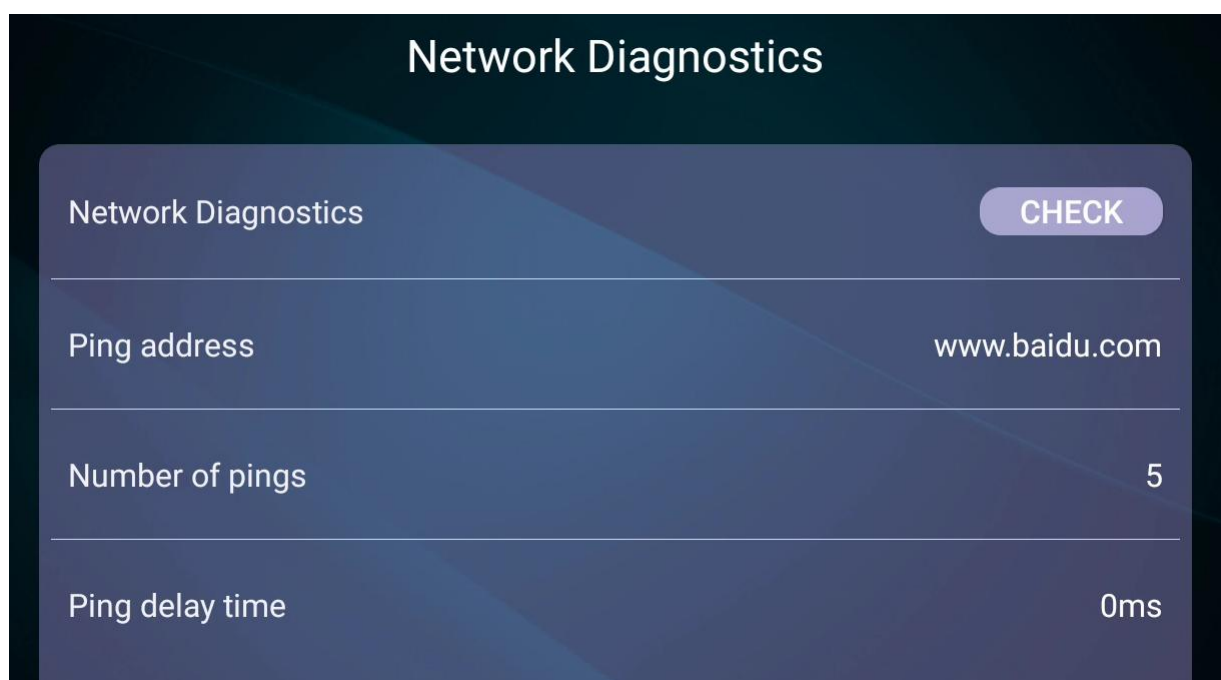


9. Restart

Click "System Restart" to restart the system.

10. Network

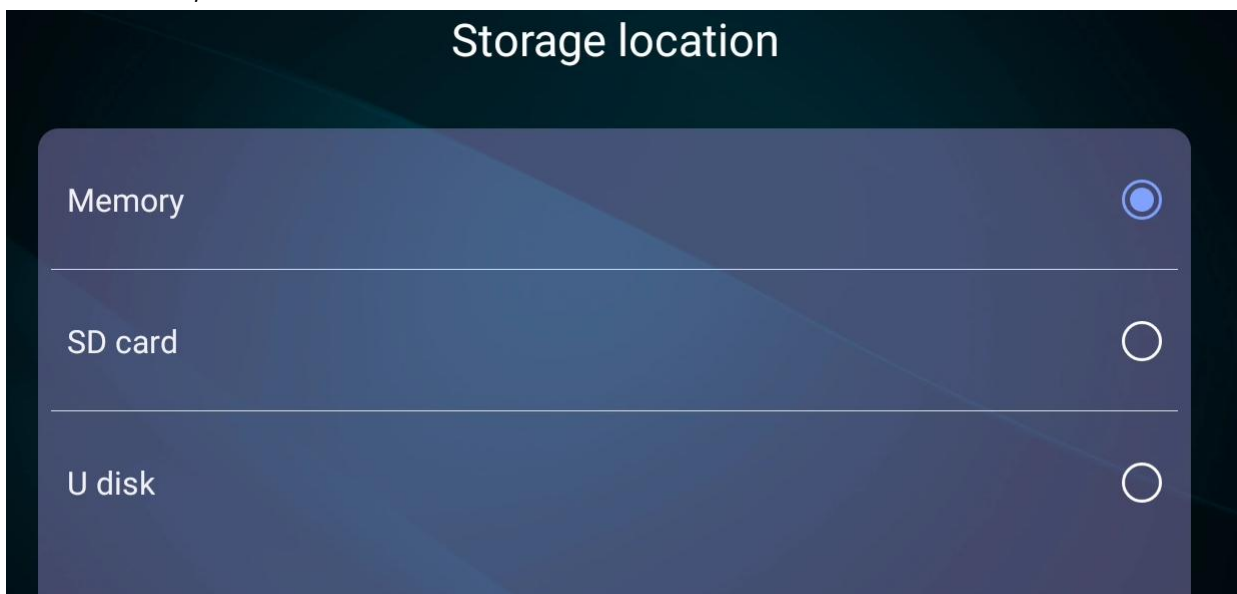
Clicking "Detect" on the "Network Diagnostics" interface allows you to diagnose the network status.



11. Storage

In the "Storage Location" section, you can choose to store the playback content in memory,

on an SD card, or on a USB flash drive.



12. About

Displays device name , device ID, system version , software version , firmware version , total capacity , available capacity , memory capacity , total available memory capacity , Ethernet network MAC address, WiFi network MAC address, etc.

about

device name



device ID

030C12251108000219A3DD0C

system version

Android 11

software version

2.3.6

firmware version

rk3568_r 2025-11-18 14:17:05

total capacity

32.00 GB

available capacity

24.57 GB

Total memory capacity

2.00 GB


MAC address of the Ethernet network

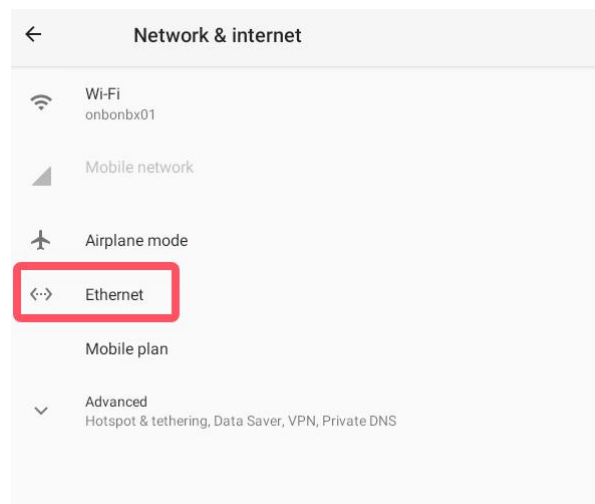
72:ce:72:e1:1d:bc

WIFI network MAC address

a8:b5:8e:0e:95:29

Network configuration

In the BX-3568A's built-in system, find the "Settings"  icon, click to enter, find "Network and IoT", enter the "Network and IoT" interface, and click "Ethernet".



In the "Ethernet" interface, "dhcp" is displayed by default, and IP addresses are automatically assigned. If you need to change the IP address, you can click "Ethernet IP mode" to change the IP acquisition method. Change "Ethernet IP mode" to "static," then click "IP address" in the pop-up window to make the changes. After making the changes, click "OK" to complete the IP address modification.

←

Ethernet

IP address

192.168.88.54

netmask

255.255.255.0

gateway

192.168.88.1

dns1

192.168.8.1

dns2

192.168.88.1

Ethernet ip mode

dhcp

Ethernet

IP address

192.168.2.210

Gateway

192.168.2.1

netmask

255.255.255.0

DNS 1

192.168.2.1

DNS 2

0.0.0.0

CANCEL

CONNECT

Contact us

Shanghai ONBON Technology Co.,Ltd (Headquarters)

Address: 7 Floor, Tower 88, 1199#, North Qinzhou Road, Xuhui District, Shanghai City, China

Tel (wechat): +86-15921814956 +86-15800379719 +86-15850351852

Email: onbon@onbonbx.com

Website: www.onbonbx.com

iLEDCloud

Website: <http://www.iledcloud.com/>



Shanghai Yangbang Technology Co., Ltd.

Address: 7th Floor, Building 88, No. 1199 Qinzhou North Road, Xuhui District, Shanghai

Website: www.onbonbx.com



Kunshan Optoelectronic Industry Base

Address: No. 1299, Fuchunjiang Road, Development Zone, Kunshan City, Jiangsu Province

仰邦微信公众号